

MANTIS WORLD 2018



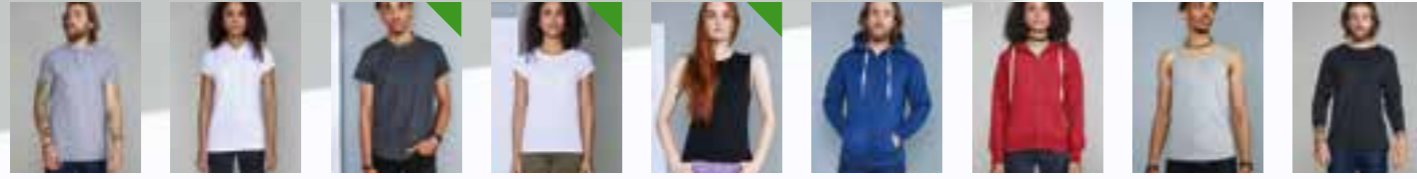
★SUPERSTAR mantis one

mantis

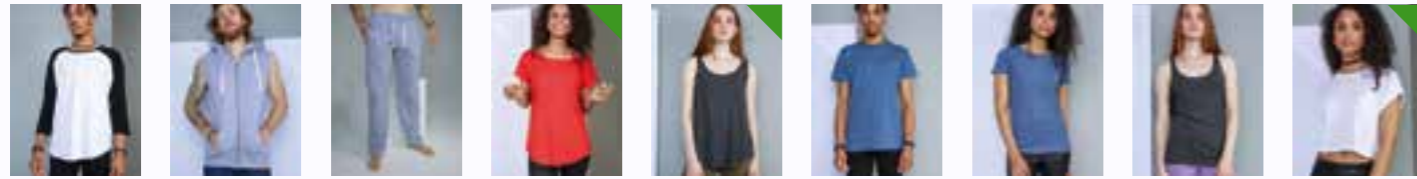
INDEX



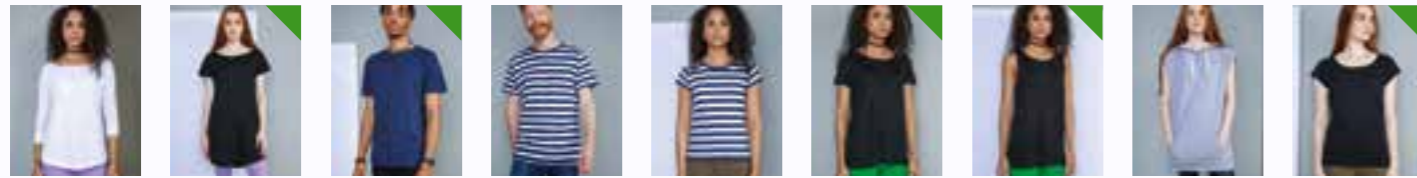
M68 P.5 M69 P.5 M71 P.35 M72 P.42 M73 P.14 M74 P.14 M76 P.18 M76S P.19 M77 P.51



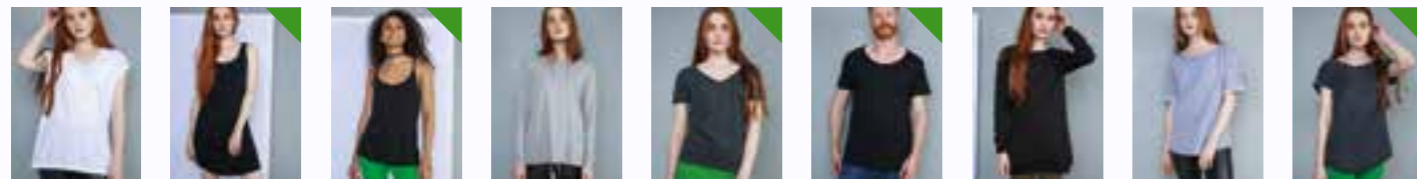
M78 P.8 M79 P.8 M80 P.24 M81 P.25 M82 P.40 M83 P.16 M84 P.17 M85 P.11 M86 P.6



M88 P.6 M89 P.17 M90 P.10 M91 P.22 M92 P.42 M93 P.28 M94 P.28 M95 P.41 M96 P.25



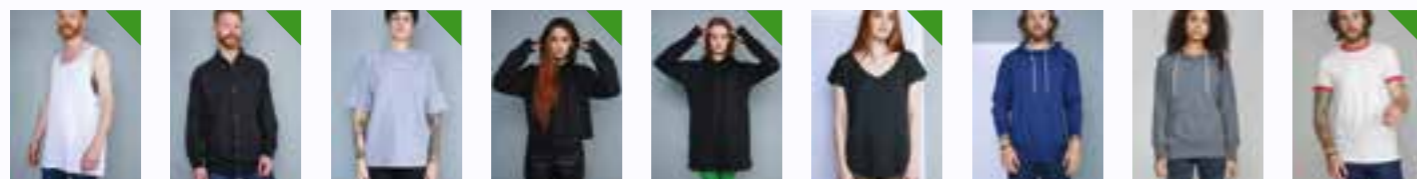
M97 P.47 M99 P.34 M104-TLC P.31 M109S P.28 M110S P.28 M111 P.30 M112 P.45 M113 P.49 M114 P.31



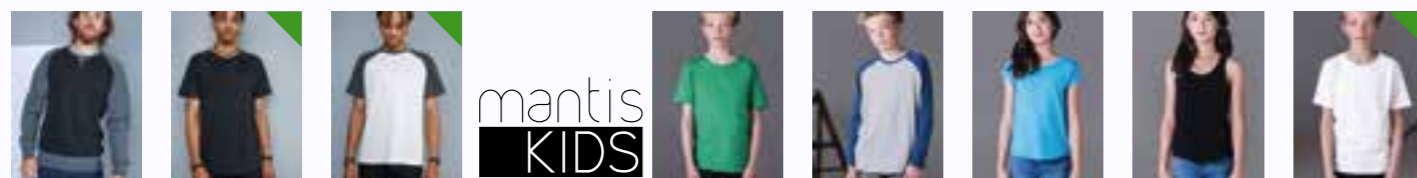
M115 P.36 M116 P.44 M117 P.45 M118 P.47 M119 P.37 M120 P.27 M121 P.50 M122 P.51 M123 P.33



M124 P.33 M125 P.41 M126 P.34 M127 P.43 M128 P.49 NEW M129 P.26 NEW M130 P.56 M131 P.57 M132 P.58



M133 P.55 M134 P.58 M135 P.59 NEW M140 P.52 NEW M142 P.53 NEW M147 P.39 NEW M173 P.15 M174 P.15 M175 P.7



M176 P.19 M177 P.9 M178 P.4 NEW mantis KIDS MK15 P.62 MK16 P.64 MK80 P.62 MK81 P.61 MK104-TLC P.63

MANTIS WORLD

Here at Mantis World, we make clothes we're proud of. Always respectful of the impact that manufacturing can make to both people and the planet, we're all about designing and developing garments in what we believe is the right way. We've got some new styles and colours for 2018 together with an even stronger determination to take even better care of the planet.

This isn't fast fashion, it's Well-Made clothing: carefully considered, responsibly produced and designed to be decorated.

Welcome to our Mantis World.

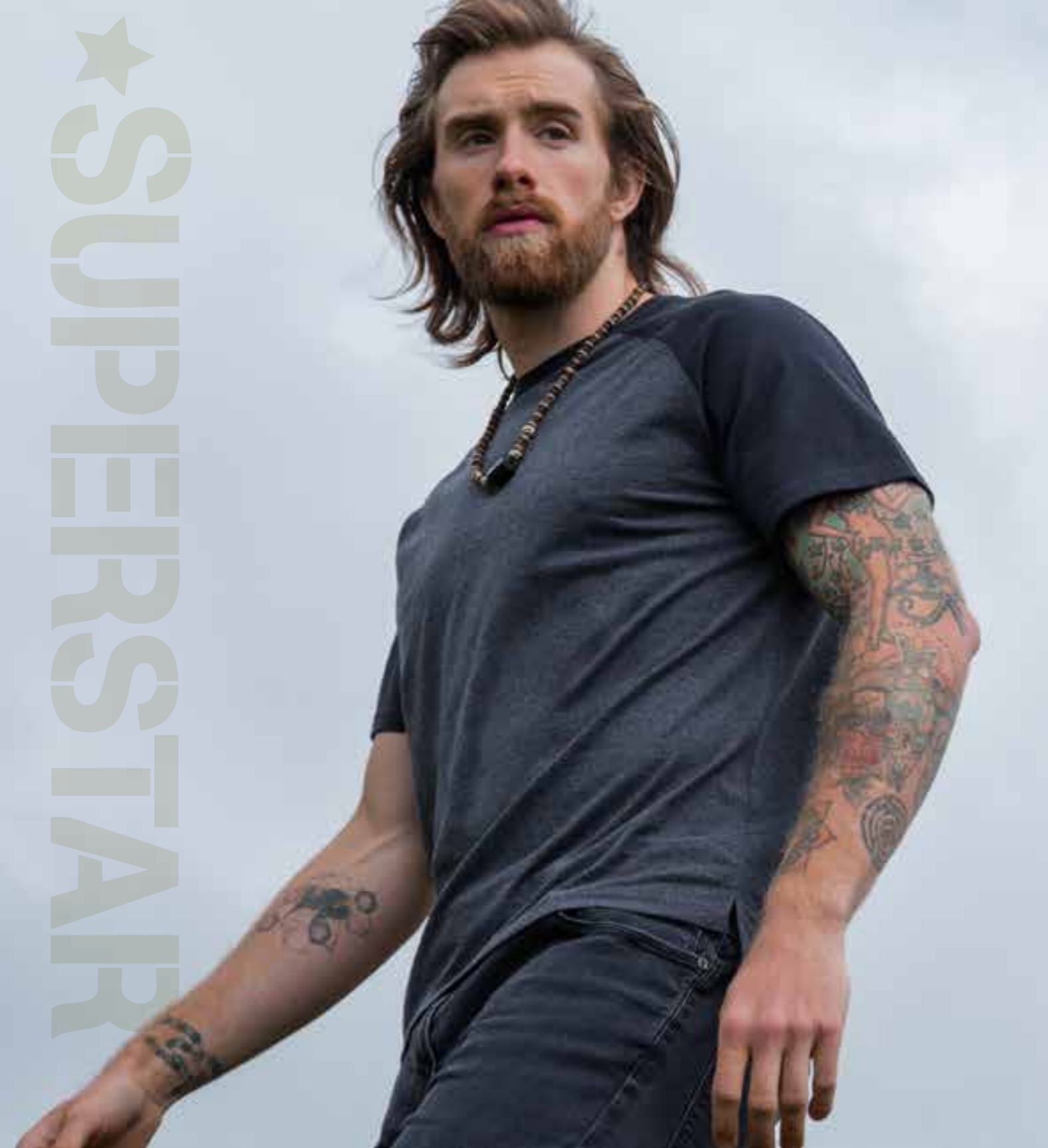


M91 NEW SHADE TOMATO



★ **SUPERSTAR**
T-SHIRTS

★
SUPERSTAR



M178 SUPERSTAR SHORT SLEEVE BASEBALL T NEW

WITH ORGANIC COTTON / MODERN FIT T / SOFT-HANDLE PEACH FINISH FABRIC / 1X1 RIB NECK / GRIN STITCH AT SLEEVE ENDS AND HEM / TEAR-OFF LABEL

100% ORGANIC COTTON (CHARCOAL GREY MELANGE/ BLACK: 75% ORGANIC COTTON, 25% POLYESTER; WASHED WHITE/ CHARCOAL GREY MELANGE 85% ORGANIC COTTON, 15% POLYESTER) / PEACH FINISH SINGLE JERSEY / 150GSM

SIZES: S, M, L, XL



ORGANIC. CERTIFIED BY CONTROL UNION CERTIFICATION CUB11271



M68 MEN'S SUPERSTAR T

MODERN FIT T / SOFT-HANDLE PEACH FINISH FABRIC / 1X1 RIB NECK / GRIN STITCH AT SLEEVE ENDS AND HEM / TEAR-OFF LABEL

100% COMBED COTTON (HEATHER GREY MELANGE 90% COTTON, 10% VISCOSE; CHARCOAL GREY MELANGE 60% COTTON 40% POLYESTER; FOREST GREEN, DARK NAVY & SURF BLUE: 100% (ORGANIC) COTTON) / PEACH FINISH SINGLE JERSEY / 150GSM

SIZES: S,M,L,XL,XXL (*COLOURS AVAILABLE IN XXL)

DARK NAVY, FOREST GREEN, SURF BLUE



ORGANIC. CERTIFIED BY CONTROL UNION CERTIFICATION CUB11271



M69 WOMEN'S SUPERSTAR T

MODERN FIT T / SOFT-HANDLE PEACH FINISH FABRIC / 1X1 RIB NECK / GRIN STITCH AT SLEEVE ENDS AND HEM / TEAR-OFF LABEL

100% COMBED COTTON (HEATHER GREY MELANGE 90% COTTON, 10% VISCOSE) / PEACH FINISH SINGLE JERSEY / 150GSM

SIZES: S, M, L, XL





M86 MEN'S SUPERSTAR LONG SLEEVE T

SOFT HANDLE PEACH FINISH FABRIC / FLATLOCK V STITCH DETAIL AT FRONT NECK / 1X1 RIBBED CUFFS / RIBBED NECK / TWIN NEEDLE AT HEM / TEAR-OFF LABEL

100% COTTON (HEATHER GREY MELANGE 90% COTTON 10% VISCOSE). STYLE IN TRANSITION TO ORGANIC COTTON / PEACH FINISH SINGLE JERSEY / 150GSM

SIZES: S, M, L, XL



M88 MEN'S SUPERSTAR BASEBALL T

MODERN FIT / SOFT-HANDLE PEACH FINISH FABRIC / CURVED RAGLAN SEAMS / ¾ LENGTH SLEEVE / CURVED HEM WITH CONTRAST OVERLOCK EDGE / TEAR-OFF LABEL.

BLACK/CHARCOAL GREY MELANGE 85% COTTON 15% POLYESTER. HEATHER GREY MELANGE / SWISS NAVY 96% COTTON 4% VISCOSE. WASHED WHITE / WARM RED, WHITE/BLACK 100% COTTON. STYLE IN TRANSITION TO ORGANIC COTTON/ PEACH FINISH SINGLE JERSEY / 150GSM

SIZES: S, M, L, XL, XXL



M175 SUPERSTAR RETRO RINGER

WITH ORGANIC COTTON / PEACH-FEEL FABRIC / WIDE CONTRAST BINDING AT NECK AND SLEEVE ENDS / CLASSIC FIT / TEAR-OFF LABEL

WASHED WHITE / WARM RED 100% ORGANIC COTTON (HEATHER GREY MELANGE / SWISS NAVY 91% ORGANIC COTTON 9% VISCOSE, BLACK / CHARCOAL GREY MELANGE 94% ORGANIC COTTON 6% POLYESTER.) / PEACH FINISH SINGLE JERSEY / 150GSM

SIZES: S, M, L, XL



WASHED WHITE / WARM RED
OTHERS
ORGANIC CERTIFIED BY CONTROL UNION CERTIFICATION CUB11271



M78 MEN'S SUPERSTAR POLO

MODERN FIT / WIDE 2 BUTTON PLACKET WITH NEUTRAL-COLOURED BUTTONS / 1X1 RIB COLLAR / NATURAL HERRINGBONE AND VELVET TAPE AT BACK NECK AND SIDE VENTS / DROP TAIL / RIBBED CUFFS / TWIN NEEDLE HEM / TEAR-OFF LABEL

100% COTTON (HEATHER GREY MELANGE 85% COTTON 15% POLYESTER) / PIQUÉ / 280GSM

SIZES: S, M, L, XL, XXL
(*HEATHER GREY NOT AVAILABLE IN XXL)



M79 WOMEN'S SUPERSTAR POLO

MODERN FIT / LONG, SKINNY PLACKET WITH 5 NEUTRAL-COLOURED BUTTONS / 1X1 RIB COLLAR / NATURAL HERRINGBONE AND VELVET TAPE AT BACK NECK AND SIDE VENTS / DROP TAIL / RIBBED CUFFS / TWIN NEEDLE HEM / TEAR-OFF LABEL

100% COTTON / PIQUÉ / 280GSM

SIZES: S, M, L, XL



M177 SUPERSTAR HENLEY T

WITH ORGANIC COTTON / 3 BUTTON PLACKET / PREMIUM, PEACH-FEEL FABRIC / CREW NECK WITH RIBBED BINDING / CURVED HEM / RAGLAN STYLING / MODERN FIT / TEAR OFF LABEL

100% ORGANIC COTTON (CHARCOAL GREY MELANGE 60% ORGANIC COTTON 40% POLYESTER) / PEACH-FINISH SINGLE JERSEY / 150GSM

SIZES: S, M, L, XL



BLACK & WHITE

CHARCOAL GREY MELANGE

CERTIFIED BY CONTROL UNION CERTIFICATION CUB11271



M90 MEN'S SUPERSTAR TRACK PANTS

CLASSIC LEG AND MODERN FIT / SOFT-HANDLE PEACH FINISH FABRIC / DEEP RIBBED WAISTBAND / 2 FRONT WELT POCKETS / NO BACK POCKETS / FLAT SELF-FABRIC LOCKER PATCH AT INSIDE BACK WAISTBAND / NATURAL COLOURED DRAWCORDS / UNFINISHED HEM WITH 2 ROWS OF FLAT STITCHING TO ALLOW GARMENT TO BE CUT TO REQUIRED LENGTH / TEAR-OFF LABEL.

80% COTTON 20% POLYESTER / PEACH FINISH / BRUSH-BACK FLEECE / 330GSM

SIZES: S, M, L, XL

BLACK

SWISS NAVY

HEATHER GREY MELANGE

★SUPERSTAR



M85 MEN'S SUPERSTAR TANK VEST

MODERN FIT TANK VEST / SOFT-HANDLE PEACH FINISH FABRIC / FLATLOCK V STITCH DETAIL AT FRONT NECK / 1X1 RIB BINDING AT NECK AND ARMHOLES / TWIN NEEDLE AT HEM / TEAR-OFF LABEL

100% COTTON (HEATHER GREY MELANGE 90% COTTON, 10% VISCOSE) / PEACH FINISH SINGLE JERSEY / 150GSM

SIZES: S, M, L, XL

BLACK

PURE WHITE

HEATHER GREY MELANGE

T



★ **SUPERSTAR**
HOODS & SWEATS



M73 MEN'S SUPERSTAR HOODIE

SOFT-HANDLE PEACH FINISH FABRIC / BRUSHED INNER / DEEP, WAFFLE LINED 3-PIECE HOOD / NATURAL COLOURED DRAWCORDS / NATURAL AND SELF-COLOURED HERRINGBONE TAPE DETAIL AT BACK NECK / EXTENDED FLATLOCK STITCHING AT KANGAROO POCKET / TEAR-OFF LABEL.

80% COTTON 20% POLYESTER / PEACH FINISH / BRUSH-BACK FLEECE / 330GSM

SIZES: S, M, L, XL, XXL

M74 WOMEN'S SUPERSTAR HOODIE

SOFT-HANDLE PEACH FINISH FABRIC / BRUSHED INNER / DEEP, WAFFLE LINED 3-PIECE HOOD / NATURAL COLOURED DRAWCORDS / NATURAL AND SELF-COLOURED HERRINGBONE TAPE DETAIL AT BACK NECK / EXTENDED FLATLOCK STITCHING AT KANGAROO POCKET / GENTLY SHAPED SIDE SEAMS / TEAR-OFF LABEL.

80% COTTON 20% POLYESTER / PEACH FINISH / BRUSH-BACK FLEECE / 330GSM

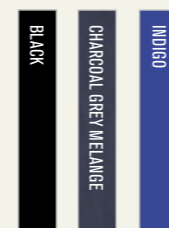
SIZES: S, M, L, XL



M173 MEN'S URBAN SUPERSTAR SLOUCH HOODIE

MEN'S SLOUCH HOODIE / PEACH FINISH FRENCH TERRY FABRIC / CROSSOVER, 3-PANELLED HOOD / KANGAROO POCKET / DEEP PHONE POCKET WITH BRASS EFFECT RIVET / HIDDEN OPENING FOR HEADPHONE CABLE / BACK NECK TAPING / RIBBED HEM AND CUFFS / NATURAL-COLOURED DRAWCORDS WITH SHOELACE TIP / TONAL FLAT STITCHING / INDIGO AND CHARCOAL; TONAL INNER / TEAR-OFF LABEL.

80% COTTON 20% POLYESTER / PEACH FINISH FRENCH TERRY / 240GSM
SIZES: S, M, L, XL



M174 WOMEN'S URBAN SUPERSTAR SLOUCH HOODIE

PEACH FINISH FRENCH TERRY FABRIC / CROSSOVER, 3-PANELLED HOOD / KANGAROO POCKET / DEEP PHONE POCKET WITH BRASS EFFECT RIVET / HIDDEN OPENING FOR HEADPHONE CABLE / BACK NECK TAPING / RIBBED HEM AND CUFFS / NATURAL-COLOURED DRAWCORDS WITH SHOELACE TIP / TONAL FLAT STITCHING / INDIGO AND CHARCOAL; TONAL INNER / TEAR-OFF LABEL.

80% COMBED COTTON 20% POLYESTER / PEACH FINISH FRENCH TERRY / 240GSM
SIZES: S, M, L, XL



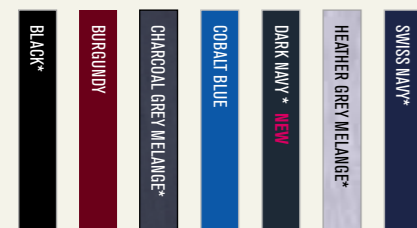


M83 MEN'S SUPERSTAR ZIP THROUGH HOODIE

SOFT-HANDLE PEACH FINISH FABRIC / BRUSHED INNER / DEEP, LINED 3-PIECE HOOD / NATURAL COLOURED DRAWCORDS WITH BRASS EFFECT TIPPING / NATURAL HERRINGBONE AND SELF-COLOURED TAPING AT BACK NECK / SELF FABRIC LOCKER PATCH ON INSIDE BACK NECK / EXTENDED FLATLOCK STITCHING AT KANGAROO POCKET / BRASS EFFECT YKK ZIPPER / TEAR-OFF LABEL.

80% COTTON 20% POLYESTER / PEACH FINISH / BRUSH-BACK FLEECE / 330GSM

SIZES: S, M, L, XL, XXL (* COLOURS AVAILABLE IN XXL)



M84 WOMEN'S SUPERSTAR ZIP THROUGH HOODIE

SOFT-HANDLE PEACH FINISH FABRIC / BRUSHED INNER / DEEP, LINED 3-PIECE HOOD / NATURAL COLOURED DRAWCORDS WITH BRASS EFFECT TIPPING / NATURAL HERRINGBONE AND SELF-COLOURED TAPING AT BACK NECK / SELF FABRIC LOCKER PATCH ON INSIDE BACK NECK / EXTENDED FLATLOCK STITCHING AT KANGAROO POCKET / BRASS EFFECT YKK ZIPPER / TEAR-OFF LABEL.

80% COMBED COTTON 20% POLYESTER / PEACH FINISH / BRUSH-BACK FLEECE / 330GSM

SIZES: S, M, L, XL



M89 MEN'S SUPERSTAR SLEEVELESS HOODIE

SOFT-HANDLE PEACH FINISH FABRIC / BRUSHED INNER / HIGH NECK LINE / RIB TRIM AT ARMHOLES / BRASS EFFECT ZIPPER / RIB TRIM AROUND KANGAROO POCKETS / SELF FABRIC LOCKER PATCH ON INSIDE BACK NECK / NATURAL HERRINGBONE AND SELF COLOURED VELVET TAPING AT NECK / TEAR-OFF LABEL.

80% COMBED COTTON 20% POLYESTER / PEACH FINISH / BRUSH-BACK FLEECE / 330GSM

SIZES: S, M, L, XL



★SUPERSTAR



M76 MEN'S SUPERSTAR SWEATSHIRT

SOFT-HANDLE PEACH FINISH FABRIC / RAGLAN SLEEVES / RIB V INSERT AT FRONT NECK / RIBBED SIDE PANELS / NATURAL AND SELF-COLOURED HERRINGBONE TAPE DETAIL AT BACK NECK / TAB ON OUTSIDE BACK NECK / TEAR-OFF LABEL

80% COMBED COTTON 20% POLYESTER / PEACH FINISH / BRUSH-BACK FLEECE / 330GSM

SIZES: S, M, L, XL, XXL

BLACK

HEATHER GREY MELANGE

SWISS NAVY



M76S MEN'S STRIPED SUPERSTAR SWEATSHIRT

SOFT-HANDLE PEACH FINISH FABRIC / 2X2 STRIPED RIB HEM AND CUFFS / RAGLAN SLEEVES / RIB V INSERT AT FRONT NECK / RIBBED SIDE PANELS / NATURAL AND SELF-COLOURED HERRINGBONE TAPE DETAIL AT BACK NECK / TAB ON OUTSIDE BACK NECK / TEAR-OFF LABEL

80% COMBED COTTON 20% POLYESTER / PEACH FINISH / BRUSH-BACK FLEECE / 330GSM

SIZES: S, M, L, XL

HEATHER GREY MELANGE

BLACK STRIPE



M176 MEN'S SUPERSTAR BASEBALL SWEATSHIRT

PREMIUM, PEACH FEEL FABRIC / CONTRAST PANELLING / CONTRAST V INSERT AT NECK / BACK NECK LOCKER PATCH / RAGLAN SLEEVE / BRUSHED INNER / CONTRAST RIBBED HEM / SLIMMER FIT TEAR-OFF LABEL

80% COTTON 20% POLYESTER / PEACH FINISH / BRUSH-BACK FLEECE / 330GSM

SIZES: S, M, L, XL

BLACK

CHARCOAL GREY MELANGE



mantis
ORIGINALS

M132 NEW SHADE LIGHT DENIM

M91 WOMEN'S LOOSE FIT T

LOOSE FIT, LONGER LENGTH T / CURVED HEM / WIDE NECKLINE / TWIN NEEDLE HEM AND SLEEVE ENDS / SLIGHTLY LONGER AT BACK / TEAR OFF LABEL

BLACK, WHITE 100% COTTON / HEATHER GREY 85% COTTON 15% VISCOSE, CHARCOAL GREY 60% COTTON 40% POLYESTER, TOMATO 100% ORGANIC COTTON / NATURAL MELANGE 80% ORGANIC COTTON 20% POLYESTER / SINGLE JERSEY / 125GSM

SIZES S, M, L, XL

BLACK	CHARCOAL GREY MELANGE
TOMATO NEW	HEATHER GREY MELANGE
NATURAL MELANGE NEW	WHITE



M80 MEN'S ROLL SLEEVE T

WITH ORGANIC COTTON

FOLDED ROLL SLEEVES / CREW NECK / 1X1 RIB NECK / TWIN NEEDLE, STRAIGHT HEM / TEAR-OFF LABEL

BLACK, WHITE 100% ORGANIC COTTON, CHARCOAL GREY 60% ORGANIC COTTON 40% POLYESTER / SINGLE JERSEY / 150GSM

SIZES S, M, L, XL

BLACK

CHARCOAL GREY MELANGE

WHITE

BLACK & WHITE

CHARCOAL GREY MELANGE



ORGANIC.
CERTIFIED BY CONTROL UNION CERTIFICATION CU811271



M81 WOMEN'S ROLL SLEEVE T

WITH ORGANIC COTTON

FOLDED ROLL SLEEVES / CREW NECK / 1X1 RIB NECK / TWIN NEEDLE, STRAIGHT HEM / SHAPED SIDE SEAMS / TEAR-OFF LABEL

BLACK, WHITE 100% ORGANIC COTTON, CHARCOAL GREY 60% ORGANIC COTTON 40% POLYESTER / SINGLE JERSEY / 150GSM

SIZES S, M, L, XL

BLACK

CHARCOAL GREY MELANGE

WHITE

BLACK & WHITE

CHARCOAL GREY MELANGE



ORGANIC.
CERTIFIED BY CONTROL UNION CERTIFICATION CU811271



M96 WOMEN'S CROP TOP T

ORGANIC COTTON

RELAXED FIT / CROP LENGTH CREW T / 1X1 RIB NECK / TWIN NEEDLE HEM / ROLL BACK SLEEVES / TEAR-OFF LABEL

100% ORGANIC COTTON / SINGLE JERSEY / 150GSM

SIZES S, M, L

BLACK

WHITE



ORGANIC.
CERTIFIED BY CONTROL UNION CERTIFICATION CU811271



M129 FLASH DANCE T NEW

ORGANIC COTTON

LOOSE FIT / WIDE, OFF-SHOULDER NECKLINE / RAGLAN SLEEVE / RAW EDGE AT NECK AND SLEEVE ENDS / STRAIGHT HEM WITH DROP BACK TAIL AND SIDE VENTS / TEAR OFF LABEL

100% ORGANIC COTTON / SINGLE JERSEY / 150GSM

SIZES: S, M, L, XL

BLACK

WHITE



ORGANIC.
CERTIFIED BY CONTROL UNION CERTIFICATION CUB11271



M120 MEN'S RAW SCOOP T

WITH ORGANIC COTTON

MODERN FIT T / CUT-OPEN 1X1 RIB AT NECK TO GIVE RAW EDGE / LOWER, SCOOP NECK / TWIN NEEDLE HEM AND SLEEVE ENDS / TEAR-OFF LABEL

100% ORGANIC COTTON (CHARCOAL GREY 60% ORGANIC COTTON 40% POLYESTER / SINGLE JERSEY / 150GSM

SIZES: S, M, L, XL

BLACK

CHARCOAL GREY MELANGE

WHITE



ORGANIC.
CERTIFIED BY CONTROL UNION CERTIFICATION CUB11271

M93 MEN'S DUO BLEND T

MODERN FIT CREW / RIBBED NECK / SOFT AND COMFORTABLE BLENDED FABRIC FOR EASE OF WASH AND WEAR / CAN BE SUBLIMATED / TWIN NEEDLE AT HEM AND SLEEVE ENDS / TEAR-OFF LABEL

60% COTTON 40% POLYESTER / SINGLE JERSEY / 145GSM

SIZES: S, M, L, XL, XXL

BLACK
BLUE MARL
CHARCOAL GREY MELANGE
WHITE

M94 WOMEN'S DUO BLEND T

MODERN FIT CREW / RIBBED NECK / SOFT AND COMFORTABLE BLENDED FABRIC FOR EASE OF WASH AND WEAR / CAN BE SUBLIMATED / TWIN NEEDLE AT HEM AND SLEEVE ENDS / SHAPED SIDE SEAMS / TEAR-OFF LABEL

60% COTTON 40% POLYESTER / SINGLE JERSEY / 145GSM

SIZES: S, M, L, XL

BLACK
BLUE MARL
CHARCOAL GREY MELANGE
WHITE



M109S MEN'S STRIPY T

YARN DYED STRIPED JERSEY FABRIC / 1X1 RIB AT NECK / TWIN NEEDLE STITCHING AT HEM AND SLEEVE ENDS

100% COTTON / SINGLE JERSEY / 150GSM

SIZES: S, M, L, XL / ALSO AVAILABLE FOR KIDS: HM109S

BLACK	WHITE
BLACK	RED
CLASSIC BLUE	WHITE
NAVY	WHITE

M110S WOMEN'S STRIPY T

YARN DYED STRIPED JERSEY FABRIC / 1X1 RIB AT NECK / TWIN NEEDLE STITCHING AT HEM AND SLEEVE ENDS / GENTLY CURVED SIDE SEAMS

100% COTTON / SINGLE JERSEY / 150GSM

SIZES: S, M, L, XL / ALSO AVAILABLE FOR KIDS: HM110S

BLACK	WHITE
BLACK	RED
CLASSIC BLUE	WHITE
NAVY	WHITE





M111 WOMEN'S "BLACK LABEL" TENCEL® T

OPEN NECK T / LONGER LENGTH / SOFT HANDLE / LUXURIOUS DRAPE / SIDE VENTS / NARROW RIB AT NECK / BACK NECK TAPING / TEAR-OFF LABEL

100% TENCEL® LYOCCELL / SINGLE JERSEY / 150GSM

SIZES: S, M, L

BLACK



M114 WOMEN'S U-NECK T

ORGANIC COTTON

OPEN, SCOOP NECK / NARROW SELF-FABRIC TRIM AT NECK / LONGER LENGTH / TWIN NEEDLE AT HEM AND SLEEVE ENDS / TEAR-OFF LABEL

100% ORGANIC COTTON / SINGLE JERSEY / 150GSM

SIZES: S, M, L, XL

BLACK
WHITE



M104-TLC MEN'S FAVOURITE T

ORGANIC COTTON

1X1 RIB CREW NECK / TAPED SHOULDER SEAMS / COVER STITCH HEM AND SLEEVE ENDS

100% ORGANIC COTTON / SINGLE JERSEY / 150GSM

SIZES: S, M, L, XL

BLACK
NAUTICAL NAVY
WHITE





**M123 WOMEN'S VINTAGE SLUB
LOOSE FIT T**

ORGANIC COTTON

CURVED HEM WITH GRIN STITCH / THICK & THIN EFFECT SLUB FABRIC /
LOOSE AND RELAXED FIT / WIDER NECKLINE / TEAR OFF LABEL

100% ORGANIC COTTON / SLUB JERSEY / 140GSM

SIZES: S, M, L, XL

M124 MEN'S VINTAGE SLUB T

ORGANIC COTTON

GRIN STITCH AT HEM AND SLEEVE ENDS / BINDING AT NECK / THICK
& THIN EFFECT SLUB FABRIC / CLASSIC FIT / TEAR OFF LABEL

100% ORGANIC COTTON / SLUB JERSEY / 140GSM

SIZES: S, M, L, XL

- BLACK
- SLATE GREY
- LIGHT DENIM **NEW**
- IVORY
- WHITE





M126 MEN'S LONGER LENGTH T

ORGANIC COTTON

LONG LENGTH T / CURVED HEM / SKATER FIT / WIDE NECK RIB / TEAR-OFF LABEL

100% ORGANIC COTTON / SINGLE JERSEY / 150GSM

SIZES: S, M, L, XL



ORGANIC. CERTIFIED BY CONTROL UNION CERTIFICATION CUB11271



M99 WOMEN'S LOOSE FIT T DRESS

ORGANIC COTTON

CURVED HEM / LOOSE FIT DRESS / WIDE NECKLINE / SLIGHT DROP TAIL / NARROW RIB AT NECK / TWIN NEEDLE HEM AND SLEEVE ENDS / TEAR-OFF LABEL

100% ORGANIC COTTON / SINGLE JERSEY / 150GSM

SIZES: S, M, L, XL



ORGANIC. CERTIFIED BY CONTROL UNION CERTIFICATION CUB11271



M71 WOMEN'S LONG LENGTH T

LONGER LENGTH T / 1X1 RIB NECK / TWIN NEEDLE STITCH HEM AND SLEEVE ENDS / TEAR-OFF LABEL

100% COTTON / SINGLE JERSEY / 125GSM

SIZES: S, M, L, XL





**M115 WOMEN'S DUO BLEND
V-NECK TUNIC**

LOOSE FIT / V NECK / ROLL SLEEVE / STRAIGHT HEM / NARROW
BINDING AT NECKLINE / TEAR-OFF LABEL

60% COTTON 40% POLYESTER / SINGLE JERSEY / 145GSM

SIZES S, M, L, XL

- BLACK
- CHARCOAL GREY MELANGE
- WHITE



M119 WOMEN'S SCOOP BACK V

WITH ORGANIC COTTON

2 WAYS TO WEAR / V AND SCOOP NECK OPTIONS / STRAIGHT HEM / NARROW RIB AROUND
NECKLINE / TEAR-OFF LABEL

100% ORGANIC COTTON (CHARCOAL GREY MELANGE 60% ORGANIC COTTON 40% POLYESTER
SINGLE JERSEY / 150GSM

SIZES: S, M, L, XL

- BLACK
- CHARCOAL GREY MELANGE
- WHITE





**M147 WOMEN'S LOOSE FIT
V NECK T NEW**

WITH ORGANIC COTTON

LOOSER, RELAXED FIT / DEEP V FRONT /
NARROW RIB AROUND NECKLINE / CURVED HEM /
TEAR-OFF LABEL

100% ORGANIC COTTON (HEATHER GREY MELANGE:
85% ORGANIC COTTON, 15% VISCOSE)

SIZES: S, M, L, XL

- BLACK
- HEATHER GREY MELANGE
- WHITE



HEATHER GREY MELANGE



ORGANIC.
CERTIFIED BY CONTROL UNION CERTIFICATION CUB11271



M82 WOMEN'S RAW TANK T

ORGANIC COTTON
 SLEEVELESS TANK / RAW EDGE AT ARMHOLE / NARROW RIB AT NECK / STRAIGHT HEM WITH TWIN NEEDLE FINISH / TEAR-OFF LABEL
 100% ORGANIC COTTON / SINGLE JERSEY / 150GSM
 SIZES: S, M, L

- BLACK
- WHITE



M95 WOMEN'S DUO BLEND RACERBACK VEST

LONGER LENGTH VEST / CUT AWAY, RACERBACK STYLING / STRAIGHT HEM WITH TWIN NEEDLE FINISH / NARROW BINDING AROUND NECK AND ARMHOLE / TEAR-OFF LABEL
 60% COTTON 40% POLYESTER / SINGLE JERSEY / 145GSM
 SIZES: S, M, L, XL

- BLACK
- CHARCOAL GREY MELANGE
- WHITE



M125 WOMEN'S VINTAGE SLUB TANK

ORGANIC COTTON
 THICK AND THIN EFFECT SLUB FABRIC / LONGER, CURVED BACK HEM / BINDING AT NECK AND ARMHOLES / TEAR-OFF LABEL
 100% ORGANIC COTTON / SLUB JERSEY / 140GSM
 SIZES: S, M, L

- BLACK **NEW**
- SLATE GREY
- WHITE





M92 WOMEN'S LOOSE FIT VEST

LOOSE FIT, LONGER LENGTH VEST / LIGHTERWEIGHT FABRIC / CURVED HEM / BINDING AT NECK AND ARMHOLES / LOWER FRONT AND BACK NECK / TWIN NEEDLE HEM / TEAR-OFF LABEL

100% COTTON (NATURAL MELANGE 80% ORGANIC COTTON, 20% POLYESTER / CHARCOAL GREY MELANGE 60%, COTTON 40% POLYESTER) / 125GSM

SIZES: S, M, L, XL

- BLACK
- CHARCOAL GREY MELANGE
- NATURAL MELANGE
- WHITE

NATURAL MELANGE



CERTIFIED BY CONTROL UNION CERTIFICATION CU811271

M72 WOMEN'S LONG LENGTH VEST

LONGER LENGTH TANK VEST / LIGHTERWEIGHT FABRIC / SCOOPED FRONT AND BACK NECK / GENTLY FITTED / NARROW BINDING AT NECK AND ARMHOLES / TWIN NEEDLE HEM / TEAR-OFF LABEL

100% COTTON / SINGLE JERSEY / 125GSM

SIZES: S, M, L, XL

- BLACK
- WHITE

M127 WOMEN'S CROP VEST

ORGANIC COTTON

SHORTER LENGTH VEST / SLIGHT A-LINE / NARROW BINDING AT NECK AND ARMHOLES / TWIN NEEDLE HEM / TEAR-OFF LABEL

100% ORGANIC COTTON / SINGLE JERSEY / 150GSM

SIZES: S, M, L

- BLACK
- WHITE



ORGANIC

CERTIFIED BY CONTROL UNION CERTIFICATION CU811271





M116 WOMEN'S CURVED VEST DRESS

ORGANIC COTTON

LONG LENGTH VEST / CURVED HEM / SCOOP FRONT AND BACK / NARROW BINDING AROUND NECK AND ARMHOLES / SLIM FIT / TEAR-OFF LABEL

100% ORGANIC COTTON / SINGLE JERSEY / 150GSM

SIZES: S, M, L, XL

- BLACK
- WHITE



ORGANIC.
CERTIFIED BY CONTROL UNION CERTIFICATION CU811271



M112 WOMEN'S "BLACK LABEL" TENCEL® TANK VEST

LONGER LENGTH, HIGH-CUT VEST / SOFT HANDLE / LUXURIOUS DRAPE / WIDE NECKLINE / NARROW RIB AT NECK / SIDE VENTS / TEAR-OFF LABEL

100% TENCEL® LYOCCELL / SINGLE JERSEY / 150GSM

SIZES: S, M, L

- BLACK

M117 WOMEN'S TENCEL® "BLACK LABEL" STRAP VEST

STRAP VEST WITH HIGH RACERBACK / RELAXED FIT / SOFT HANDLE / LUXURIOUS DRAPE / NARROW BINDING AT NECK AND ARMHOLES / TEAR-OFF LABEL

100% TENCEL® LYOCCELL / SINGLE JERSEY / 150GSM

SIZES: S, M, L

- BLACK

TENCEL® PRODUCTION STARTS WITH WOOD FROM FOREST PLANTATIONS WHICH PRACTICE SUSTAINABILITY AND GUARANTEE REFORESTATION.





M118 WOMEN'S LOOSE FIT HOODED T

LIGHTERWEIGHT T-SHIRT HOODIE / LOOSE FIT /
DRAWCORD AT HEM AND HOOD / RIBBED CUFFS /
TEAR-OFF LABEL
100% COTTON (HEATHER GREY MELANGE 85% COTTON
15% VISCOSE) / SINGLE JERSEY / 125GSM
SIZES: S, M, L, XL

- BLACK
- HEATHER GREY MELANGE
- WHITE

M97 WOMEN'S LOOSE FIT LONG SLEEVE T

LOOSE FIT, LONG-SLEEVE T / LIGHTERWEIGHT FABRIC
/ CURVED HEM / 1X1 RIB CUFFS / WIDE NECKLINE /
SLIGHT DROP TAIL / TWIN NEEDLE AT HEM /
TEAR-OFF LABEL
100% COTTON / SINGLE JERSEY / 125GSM
SIZES: S, M, L, XL

- BLACK
- WHITE



M128 FLASH DANCE SWEAT
NEW

WITH ORGANIC COTTON

LOOSE FIT / WIDE, OFF-SHOULDER NECKLINE / RAW
EDGE AT NECK / ¾ LENGTH SLEEVES WITH ROLLED BACK
EDGE / STRAIGHT HEM / TEAR OFF LABEL

80% ORGANIC COTTON 20% RECYCLED PET (rPET) /
FRENCH TERRY / 300GSM

SIZES: S, M, L, XL

BLACK

HEATHER GREY MELANGE

**M113 WOMEN'S OVERSIZED
SLEEVELESS HOODIE**

LONG LENGTH / LOOSE FIT / RAW EDGE AT ARMHOLES /
UNLINED 3-PIECE HOOD / NATURAL DRAWCORDS /
RAW EDGE DETAIL AT HEM / KANGAROO POCKET /
TEAR-OFF LABEL

80% COTTON 20% POLYESTER / FRENCH TERRY /
280GSM

SIZES: S, M, L

BLACK

HEATHER GREY MELANGE



CERTIFIED BY CONTROL UNION CERTIFICATION CUB11271



M121 WOMEN'S LONG LENGTH SWEAT

RAGLAN SLEEVES / LONGER, RELAXED FIT SWEATSHIRT / ELLIPTICAL HEM (LONGER AT BACK) / LOOP BACK FABRIC / DEEP 1X1 RIBBED HEM AND CUFFS / TEAR-OFF LABEL

80% COTTON 20% POLYESTER / FRENCH TERRY / 280GSM

SIZES: S, M, L, XL

- BLACK
- HEATHER GREY MELANGE



M77 WOMEN'S FAVOURITE SWEATSHIRT

BOUND NECK SWEATSHIRT / RAGLAN SLEEVE / RIBBED NECK AND CUFFS / WIDER NECKLINE / TEAR-OFF LABEL

80% COTTON 20% POLYESTER / FRENCH TERRY / 280GSM

SIZES: S, M, L, XL

- BLACK
- HEATHER GREY MELANGE
- NAVY
- WHITE



M122 WOMEN'S SWEAT T

RELAXED FIT / SHORT SLEEVE WITH ROLLED BACK CUFFS / LOOP BACK FABRIC WITH SMOOTH SURFACE / WIDER NECKLINE WITH BINDING / CURVED HEM / TEAR-OFF LABEL

80% COTTON 20% POLYESTER / FRENCH TERRY / 280GSM

SIZES: S, M, L, XL

- HEATHER GREY MELANGE





M140 CROPPED HOODIE NEW

WITH ORGANIC COTTON

LOOSE FIT / CROPPED LENGTH / DROP SHOULDER / EXTENDED, RIBBED CUFFS WITH THUMBHOLE / DOUBLE LAYER, 3-PIECE HOOD / INSIDE BACK NECK TAPING / TEAR-OFF LABEL

80% ORGANIC COTTON 20% RECYCLED PET (RPET) / FRENCH TERRY / 300GSM

SIZES: S, M, L, XL

BLACK



CERTIFIED BY CONTROL UNION CERTIFICATION CUB11271



M142 WOMEN'S HOODIE DRESS NEW

WITH ORGANIC COTTON

LOOSE FIT / LONGER LENGTH / DROP SHOULDER / EXTENDED, RIBBED CUFFS WITH THUMBHOLE / DOUBLE LAYER, 3-PIECE HOOD / INSIDE BACK NECK TAPING / TEAR-OFF LABEL

80% ORGANIC COTTON 20% RECYCLED PET (RPET) / FRENCH TERRY / 300GSM

SIZES: S, M, L, XL

BLACK



CERTIFIED BY CONTROL UNION CERTIFICATION CUB11271

one

GENDER NEUTRAL CLOTHING



M133 'ONE' DROP ARMHOLE VEST

ORGANIC COTTON

GENDER NEUTRAL / LOW ARMHOLE /
NARROW BINDING FOR SHAPE RETENTION /
STRAIGHT HEM / TEAR-OFF LABEL

100% COTTON / SINGLE JERSEY / 150GSM

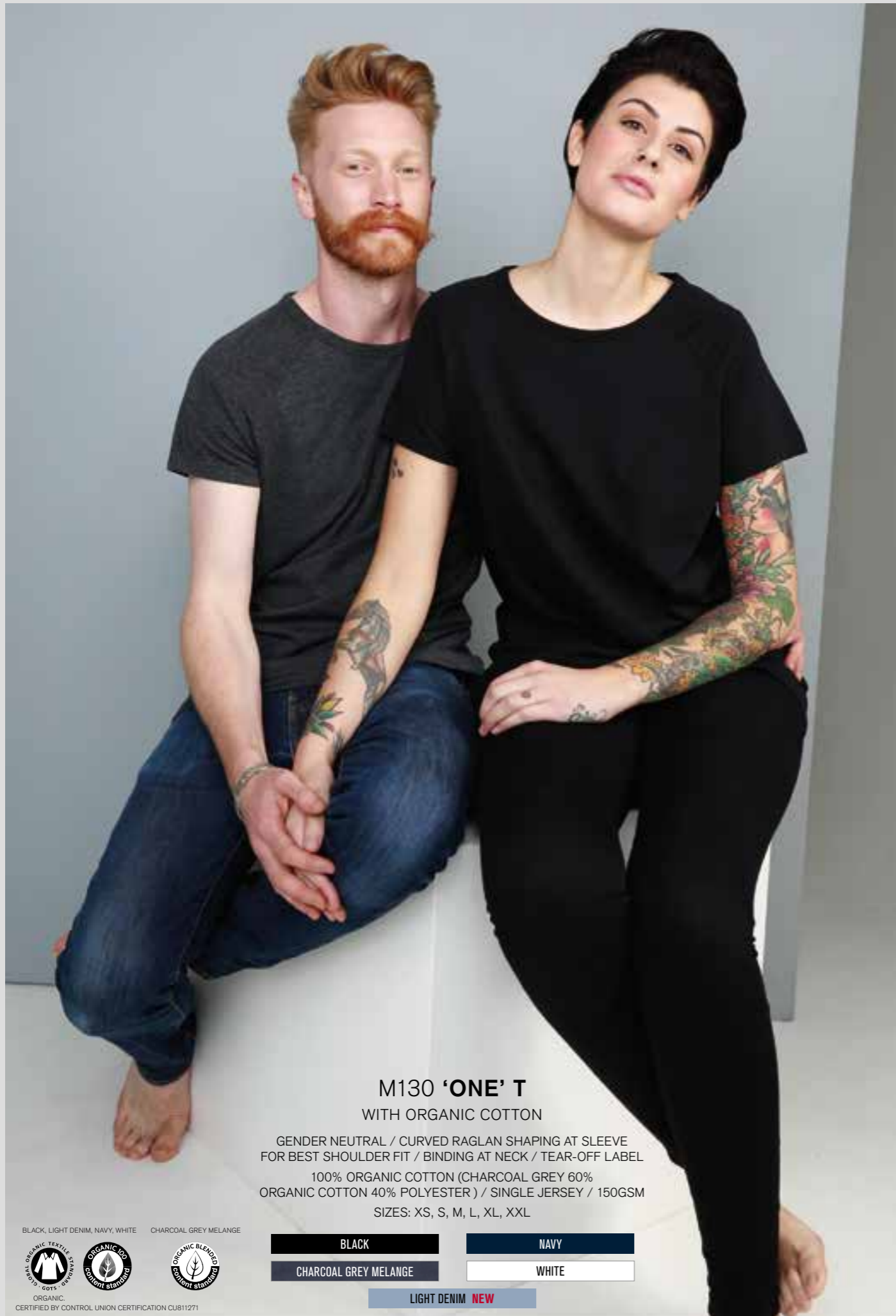
SIZES: XS, S, M, L

BLACK

WHITE



CERTIFIED BY CONTROL UNION CERTIFICATION CUB11271



M130 'ONE' T

WITH ORGANIC COTTON

GENDER NEUTRAL / CURVED RAGLAN SHAPING AT SLEEVE FOR BEST SHOULDER FIT / BINDING AT NECK / TEAR-OFF LABEL

100% ORGANIC COTTON (CHARCOAL GREY 60% ORGANIC COTTON 40% POLYESTER) / SINGLE JERSEY / 150GSM

SIZES: XS, S, M, L, XL, XXL

BLACK, LIGHT DENIM, NAVY, WHITE CHARCOAL GREY MELANGE



BLACK

NAVY

CHARCOAL GREY MELANGE

WHITE

LIGHT DENIM **NEW**

ORGANIC
CERTIFIED BY CONTROL UNION CERTIFICATION CU811271



M131 'ONE' SWEAT

WITH ORGANIC COTTON

GENDER NEUTRAL / STRAIGHT HEM WITH DROP BACK TAIL AND SIDE VENTS / HEMMED CUFFS / RAGLAN SHAPING / TAPED BACK NECK / BACK NECK LOCKER PATCH / LOOP BACK FABRIC / TEAR-OFF LABEL

60% ORGANIC COTTON 20% COTTON 20% POLYESTER / FRENCH TERRY / 300GSM

SIZES: XS, S, M, L, XL, XXL

BLACK

CHARCOAL GREY MELANGE

HEATHER GREY MELANGE



CERTIFIED BY CONTROL UNION CERTIFICATION CU811271



M132 'ONE' HOODIE

WITH ORGANIC COTTON

GENDER NEUTRAL / STRAIGHT HEM WITH DROP BACK TAIL AND SIDE VENTS / 3-PIECE HOOD / WELT FRONT POCKETS / HEMMED CUFFS / DRAWCORD FREE NECK / BACK NECK LOCKER PATCH / TEAR-OFF LABEL

60% ORGANIC COTTON 20% COTTON 20% POLYESTER / FRENCH TERRY (LIGHT DENIM: 80% ORGANIC COTTON 20% RECYCLED PET (rPET)) / 300GSM

SIZES: XS, S, M, L, XL, XXL

BLACK

CHARCOAL GREY MELANGE

HEATHER GREY MELANGE

NAVY

LIGHT DENIM **NEW**

WHITE



CERTIFIED BY CONTROL UNION CERTIFICATION CU811271



M134 'ONE' BOMBER JACKET

WITH ORGANIC COTTON

GENDER NEUTRAL / RIBBED HEM AND CUFFS / ANTIQUE BRASS EFFECT POPPER FRONT / WELT POCKETS / BACK NECK LOCKER PATCH / LOOP BACK FABRIC / TEAR-OFF LABEL

60% ORGANIC COTTON 20% COTTON 20% POLYESTER / FRENCH TERRY / 300GSM

SIZES: XS, S, M, L, XL, XXL

BLACK

CHARCOAL GREY MELANGE



CERTIFIED BY CONTROL UNION CERTIFICATION CU811271

M135 'ONE' SHORT SLEEVED SWEATSHIRT

NEW

WITH ORGANIC COTTON

GENDER NEUTRAL / DROP SHOULDER / SHORT SLEEVE / RIBBED NECK / STRAIGHT HEM WITH SIDE VENTS / DROP BACK TAIL / INSIDE BACK NECK HALF-MOON LOCKER PATCH / TEAR OFF LABEL

80% ORGANIC COTTON 20% RECYCLED PET (rPET) / FRENCH TERRY / 300GSM

SIZES: XS, S, M, L, XL

BLACK

HEATHER GREY MELANGE



CERTIFIED BY CONTROL UNION CERTIFICATION CU811271

mantis
KIDS

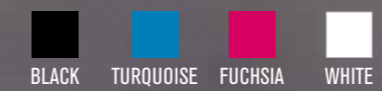


MK81 GIRLS RACERBACK TANK VEST

RACERBACK STYLING / CURVED HEM / BINDING AT NECK
AND ARMHOLES FOR DURABILITY / TEAR-OFF LABEL

100% COTTON / SINGLE JERSEY / 150GSM

SIZES (YEARS / HEIGHT) : 8-9 / 128-134CM, 10-12 / 140-152CM,
12+ / 158-164CM





MK15 / MK80

MK15 KIDS SUPERSOFT T

UNISEX CLASSIC FIT T / FASHIONABLE CONTRAST TAPING AT BACK NECK / NARROW RIB AT NECK/ TWIN NEEDLE HEM AND SLEEVE ENDS

100% COMBED COTTON / SINGLE JERSEY / 150GSM

SIZES (YEARS / HEIGHT) :8-9 / 128-134CM, 10-12 / 140-152CM, 12+ / 158-164CM



MK80 GIRLS T

MODERN FIT GIRLS T / CURVED HEM / SLIGHTLY WIDER NECKLINE / TWIN NEEDLE HEM AND SLEEVE ENDS / TEAR-OFF LABEL

100% COTTON / SINGLE JERSEY / 150GSM

SIZES (YEARS / HEIGHT) :8-9 / 128-134CM, 10-12 / 140-152CM, 12+ / 158-164CM



MK104-TLC KIDS T

UNISEX / NARROW RIB AT NECK / NATURAL COLOURED TAPE AT BACK NECK / TWIN NEEDLE HEM AND SLEEVE ENDS

100% ORGANIC COTTON / SINGLE JERSEY / 130GSM

SIZES (YEARS / HEIGHT) :8-9 / 128-134CM, 10-12 / 140-152CM, 12+ / 158-164CM



CERTIFIED BY CONTROL UNION CERTIFICATION CUB11271



MK16 KIDS SUPERSTAR BASEBALL T



MK16 KIDS SUPERSTAR BASEBALL T

MODERN, UNISEX FIT / SOFT-HANDLE PEACH FINISH FABRIC / CURVED RAGLAN SEAMS / CURVED HEM WITH CONTRAST / OVERLOCK EDGE / TEAR-OFF LABEL

100% COTTON (HEATHER GREY MELANGE / SWISS NAVY; 90% COTTON, 10% VISCOSE) / PEACH FINISH SINGLE JERSEY / 150GSM

SIZES (YEARS / HEIGHT): 8-9 / 128-134CM, 10-12 / 140-152CM, 12+ / 158-164CM



WASHED
WHITE /
WARM RED



WASHED
WHITE /
SWISS NAVY



HEATHER GREY
MELANGE /
SWISS NAVY

WELCOME TO OUR WORLD



“WELL MADE” SUMS UP WHAT WE’RE ALL ABOUT AND FOR US IT’S THE ONLY WAY FORWARD. GREAT FABRICS AND CAREFUL DESIGN WITH A COMMITMENT TO RESPONSIBLE AND ETHICAL PRODUCTION.



well made
/wel merd/

1: Made with only the best attention to quality, design and detail.

2: Made with highest regard to environmental, ethical and sustainable principles.

**COMMITTED TO USING
ONLY SUSTAINABLE
FIBRES**



**BY YEAR
2021**

I believe that we, as a brand and manufacturer, have an obligation to both current and future generations to act responsibly in what we make and how we make it. Textiles is one of the most polluting industries in the world today with, amongst many other issues, toxic chemicals and fertilisers being released into the soil and harming the people who use them, dyestuffs contaminating (and colouring) water supplies and more and more garments ending up in landfill due to the rise in the fast fashion fix. With an ever-expanding global population demanding more and more of the earth's limited resources, it's vital that we all look at ways to reduce the environmental burden.

Science has already told us that organic agriculture can help reverse climate change by locking CO² in the soil and so it's our turn to help put that into practice. I'm therefore delighted to announce our pledge that every single garment in our range will be made exclusively from sustainable fibres -including organic cotton - by 2021.

Almost every new style we've launched over the last few years has been made with eco-friendly materials, and now we're going even further by swapping any other existing styles over to sustainable sources. For cotton it means that we'll go fully organic, and any polyester used will be of the recycled PET variety.

What does this mean in practice? For those styles or colours we're in the process of moving over to sustainable fibres, the only perceivable difference to the product will be the information on the swing tag or care label. Product quality, hand-feel, performance and appearance will all be exactly the same as before. We've got a rolling schedule of style transition ahead of us, with styles in progress at time of publication marked with a "T" logo adjacent to product description. As ever, styles that have always been organic will be labelled and marked accordingly.

And how can you tell if we are keeping our promise? Alongside many major retailers and brands, we have joined the Prince of Wales International Sustainability Unit's communiqué on sustainable cotton which requires us to report data to them, so we are accountable to our pledge.

This is our promise and we hope that everyone in our industry will join us. Together we can help save the planet.

17 GOALS TO TRANSFORM OUR WORLD

IN 2015, THE UNITED NATIONS ADOPTED THE SUSTAINABLE DEVELOPMENT GOALS (SDGS), CALLING FOR WORLDWIDE ACTION BY GOVERNMENTS, BUSINESSES AND EACH ONE OF US TO ADDRESS THE SOCIAL, ECONOMIC AND ENVIRONMENTAL CHALLENGES OUR WORLD IS FACING. THESE “GLOBAL GOALS” AIM TO TACKLE ISSUES LIKE CLIMATE CHANGE, SCARCE RESOURCES, INEQUALITY AND POVERTY.



MANTIS WORLD'S IMPACT

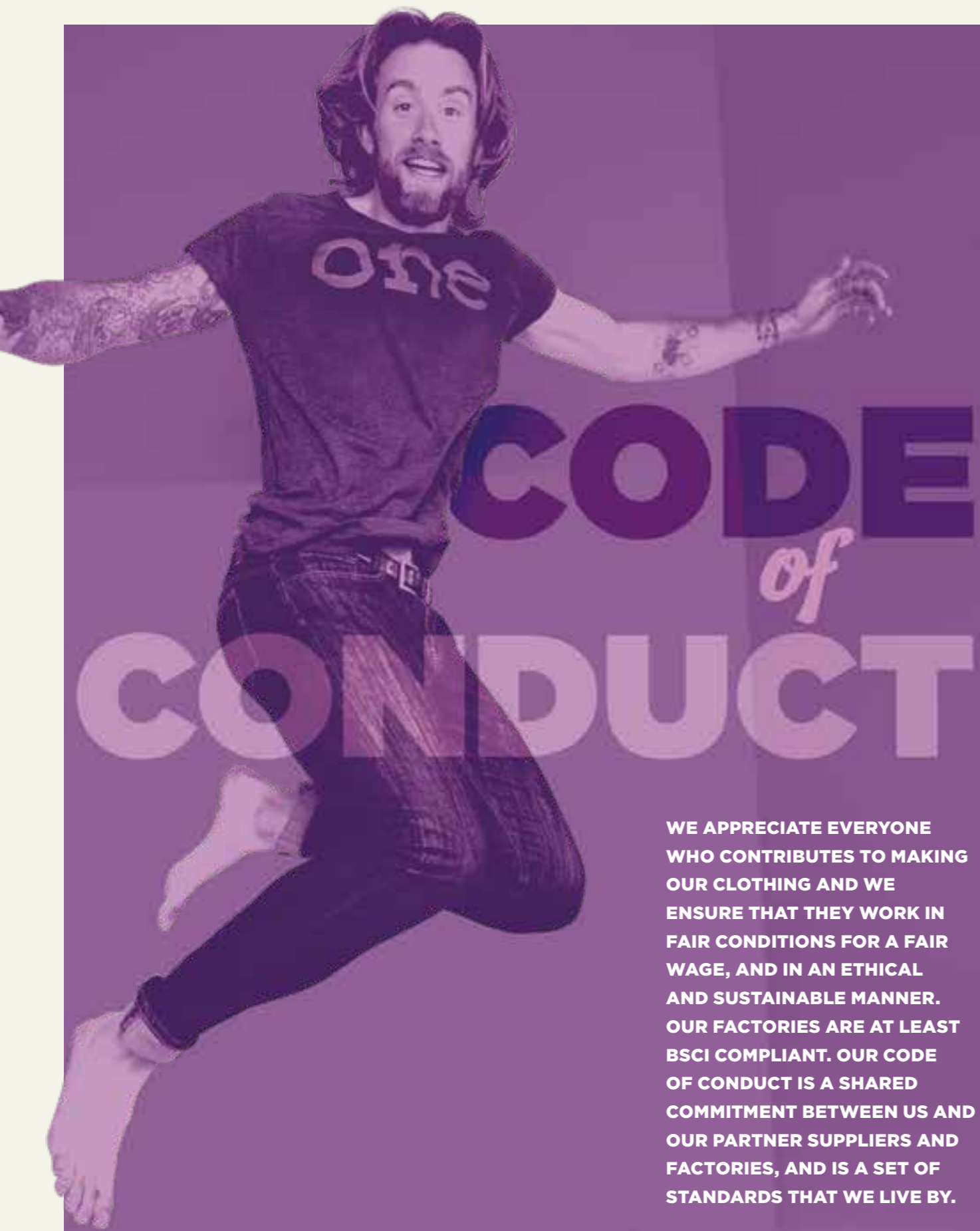
THE 17 GOALS AND THEIR SPECIFIC TARGETS PROVIDE COMPANIES WITH A USEFUL FRAMEWORK FOR DECISION-MAKING WHEN SEEKING TO IMPLEMENT MORE SUSTAINABLE PRACTICES. MANTIS WORLD WELCOME THE ROADMAP CHARTED BY THE UN AND WE HAVE STARTED INTEGRATING THE GOALS INTO OUR OWN SUSTAINABILITY STRATEGY. THE TEXTILE INDUSTRY HAS THE POTENTIAL TO WORK TOWARDS A WIDE RANGE OF THE SDGS.

A simple example: using organic instead of conventional cotton can help reverse climate change; it reduces poverty and hunger by paying fair premium wages to farmers - which in turn allows them to invest in education and infrastructure. Due to the absence of nasty chemicals being used, it's also better for our health as well as animal and plant life and water quality. Given the large impact, Mantis World have chosen the introduction of sustainable fibres such as organic cotton as our main focus for the next years. We also believe that collaboration is key in achieving the goals and we see this as an opportunity for brands and other organisations to join forces in order to drive change across the industry and shift perceptions. Together we can find new solutions and achieve results that will create a better future for all of us.

HOW CAN I MAKE A DIFFERENCE?

- Donate or recycle the clothes you no longer wear instead of disposing them to landfill
- Be conscious of what you're buying and go for sustainable fibres and products
- Dry your laundry naturally instead of tumble drying. This saves energy and is gentler on your clothes, keeping them nicer for longer
- Wash your clothes at a lower temperature with full load where possible
- Bring your own reusable bag when you shop
- Slow it all down and opt for better quality, longer lasting clothing over fast, disposable and short-lived trends
- Become involved, take action, speak up and share what you've learned. What and how you buy does have an impact

Find out more here: www.un.org/sustainabledevelopment



WE APPRECIATE EVERYONE WHO CONTRIBUTES TO MAKING OUR CLOTHING AND WE ENSURE THAT THEY WORK IN FAIR CONDITIONS FOR A FAIR WAGE, AND IN AN ETHICAL AND SUSTAINABLE MANNER. OUR FACTORIES ARE AT LEAST BSCI COMPLIANT. OUR CODE OF CONDUCT IS A SHARED COMMITMENT BETWEEN US AND OUR PARTNER SUPPLIERS AND FACTORIES, AND IS A SET OF STANDARDS THAT WE LIVE BY.

WHAT WE INSIST ON:

We work with only reputable manufacturers; each with a clear ethical and social policy with relevant and recognised certifications that are in line with our own Well Made ethos and Code of Conduct.

We only work with mills who have a suitable and effective effluent treatment plant (ETP) to ensure that the water used in the wet processing/ dyeing stages of our production is safe to be put back into the environment.

In order to ensure that our garments are kind to skin and with no potentially harmful dyes or chemicals used during manufacture, we insist that all our fabrics are certified to Oeko-tex® Standard 100, with all babywear fabric holding class 1 certification.

We ensure we know where the cotton used in the manufacture of all Mantis World garments comes from, and, in keeping with our ethical policy regarding the use of child or forced labour, continue our pledge not to use Uzbek cotton.

- No child labour
- No forced labour
- No physical disciplinary measures
- No discrimination of any kind
- Fair wages, reasonable working hours and overtime pay in accordance with local legislation
- Freedom of association and rights to collective bargaining
- Paid maternity leave
- A clean, healthy and safe work environment
- On-site health clinics or a first-aid centre
- A policy of social accountability
- Anti-bribery policy
- Anti-corruption policy

Protection and preservation of the local environment including:

- Consideration of scarce resources
- Careful waste management
- Policy to reduce, reuse and recycle
- Effluent treatment plants to ensure clean water is returned to local water systems.

Every country is different and each of our manufacturing partners provides different benefits depending on local needs. These can range from:

- Free or subsidised meals
- Free standard medication and health education
- On-site childcare facilities
- Food assistance for employees' families
- Support of local community groups.

MANTIS WORLD TAKES CERTIFICATION AND STANDARDS SERIOUSLY.

WE ALL VALUE THE ASSURANCES CERTIFICATION BRINGS; THE KNOWLEDGE AND PROOF THAT PROCESSES HAVE BEEN ASSESSED – AND THAT THEY MEET DEFINED STANDARDS. THE FOLLOWING ARE BRIEF DESCRIPTIONS OF THE VARIOUS STANDARDS, CERTIFICATIONS AND COMPLIANCES, INDUSTRY BODIES AND LOGOS THAT ARE RELEVANT TO OUR MANTIS WORLD BUSINESS AND PRODUCT RANGES.

T

Styles as marked with this logo are, at time of writing, in transition from containing conventional cotton to organic cotton. See p67 for more information.



The aim of GOTS (Global Organic Textile Standard) is to define world-wide recognized requirements that ensure organic status of textiles, from harvesting of the raw materials, through environmentally and socially responsible manufacturing up to labelling in order to provide a credible assurance to the end consumer. Mantis World, under reference CU811271 is certified by Control Union Certification, to use the GOTS logo on all blank (undecorated) items. Only garments decorated by a GOTS certified processor and in accordance with the organic standard may use the logo at their point of sale.

www.global-standard.org



The OCS (Organic Content Standard) goal is to ensure trust in organic content by means of verification of the presence and amount of organic material in a final product. It provides a strong chain of custody system from the source of the organic raw material to the final product through certification, and so allows for transparent, consistent, and comprehensive independent evaluation and verification of Organic Material content claims on products by an accredited third party Certification Body. Mantis World, license 811271, is certified by Control Union Certifications to sell OCS product in accordance with the Organic Content Standard.

www.textileexchange.org



STANDARD 100 by OEKO-TEX® is an independent product certification label for textiles that have been tested for harmful substances, dyestuffs and chemicals that may pose a health risk. Mantis World holds STANDARD 100 by OEKO-TEX® product class 1 certification, offering the highest level of assurance for all aspects of all styles including fabrics, threads, zips, poppers and other garment accessories as relevant.

www.oeko-tex.com



Of the common social standards, the content of the WRAP (Worldwide Responsible Apparel Production) code of conduct is the weakest and least strict on several issues. Although better than no code at all, Mantis World will only work with WRAP approved factories if they have a clear plan to move onto more robust standards within a year.



The RCS (Recycled Content Standard) is a chain of custody standard to track recycled raw materials through the supply chain. It's an international, voluntary standard that sets requirements for third-party certification of Recycled input with goal of increasing the use of Recycled materials. Under the standard, each stage of production is required to be certified, beginning at the recycling stage. The RCS does not address social or environmental aspects of processing and manufacturing, quality, or legal compliance.

www.textileexchange.org



SA8000®, one of the world's pre-eminent social standards, is the central document of the SAI (Social Accountability Institution) and is an auditable certification standard that encourages organizations to develop, maintain, and apply socially acceptable practices in the workplace. It is based on the UN Declaration of Human Rights, conventions of the ILO, UN and national law, and measures social performance with aim of protecting the workers along each stage of the supply chain. Mantis World encourages all suppliers to attain SA8000®, or equivalent, certification.



The Business Social Compliance Initiative (BSCI) is a non-profit organisation dedicated to the improvement of working conditions in the supply chain, with factories audited against the BSCI base code. Mantis World works with factories that are BSCI compliant or equivalent as an acceptable level of compliance.



The Sustainable Clothing Action Plan, led by WRAP (The Waste and Resources Action Programme), enables collective action to address resource impacts of clothing and textiles. The 2020 commitment brings together leading retailers, brands, re-use and recycling organisations, charities and NGOs to take action on garment supply, use and disposal to reduce their carbon, water and waste footprints. As a signatory, Mantis World has agreed to take direct action to reducing these footprints and submit annual reports to SCAP to aid in their measurement.

www.wrap.org.uk/sustainable-textiles



Mantis World is proud to be a member supporting the work of Textile Exchange (TE). TE (formerly Organic Exchange) is a non-profit organisation operating internationally and is committed to the responsible expansion of textile sustainability across the global textile value chain.

- Mantis World are proud to support Canopy: the international not-for-profit environmental organization dedicated to protecting our forests, species and climate. Canopy collaborates with more than 750 companies to develop innovative solutions, to make their supply chains more sustainable, and to help protect our world's remaining ancient and endangered forests.

www.canopyplanet.org



The BPMA (British Promotional Merchandise Association) is the trade association representing the promotional products industry. Members are credit checked and sign an industry code of conduct to ensure they operate at the highest level. The BPMA runs its own education programme and its principal aim is to promote the use and value of promotional products including clothing.

www.bpma.co.uk

CO

Common Objective (CO) is an intelligent business network that furthers sustainability in the fashion industry. Building on 12 years of work of the Ethical Fashion Forum, the CO platform matches its members with the connections and resources they need to succeed - and makes it easier for them to work in the most sustainable way. As a Founding Impact Partner, Mantis World is collaborating with CO to transform the way the fashion industry operates, for the better.

www.commonobjective.co



The Princes of Wales's International Sustainability Unit (ISU), established by HRH The Prince of Wales, launched the Sustainable Cotton Communiqué in May 2017 as part of their Sustainable Cotton initiative. At time of writing, 36 brands and retailers have signed this Communiqué and so pledged to move to using 100% sustainable cotton by 2025. This ISU initiative recognises several existing standards as delivering sustainable cotton: Organic, Fairtrade, Better Cotton Initiative (BCI), Cotton Made in Africa, with recycled cotton certified by the Global Recycled Standard (GRS) or the Recycled Claim Standard (RCS). Mantis World is both proud to join the Communiqué and has additionally pledged to both using only the "gold standard" of sustainable cotton (organic or recycled) and doing so 4 years earlier by 2021.

LABELLING INFO



BACK NECK LABEL

If total garment personalisation is what you're after, we've got the labelling system for you. We started introducing tear-off back neck labels over 5 years ago and we've been attaching them for you to remove ever since. And when we say tear-off, we really mean it. One quick rip on the white tab and the back neck of the garment is a tag-free space without your having to contend with fiddly unpicking or untidy cutting. However, if you're rather fond of the little tab and prefer to keep the size and style reference details printed on it, you can be assured it's soft and comfortable in wear. There's no room for itchy or scratchy tags in our world.

CARE LABEL

You'll probably have noticed that care labels on all garments are getting bigger and carry so much more information than ever before. There's not much we, or indeed any other brand, can do about that due to the legislations and directives imposed by various bodies and businesses across several countries and continents. We know a lot of you don't want our brand name on the care label and if we didn't have to put it there then we probably wouldn't. But we're told we must - and so we have. But, to delight all the personalisation people out there, we've positioned it right at the very end of the label so it can be cut right off with a quick snip. One slice with the scissors and what's left is all the legal fibre content stuff, the language bits and some wash care guidelines. Invariably these will include the recommendation to wash the garment inside out to protect the surface of the garment from all that agitation and to consider lower temperatures to save energy - both also helping prolong the wear life of the garments.

'TO FIT' SIZE CHART

WOMEN'S FIT SIZES				
	S	M	L	XL
CHEST (IN)	32/34in	35/37in	38/40in	41/43in
CHEST (CM)	81/86cm	88/94cm	96/101cm	104/109cm
UK SIZE	10	12	14	16-18
CONTINENTAL	38	40	42	44

MEN'S FIT SIZES					
	S	M	L	XL	XXL
CHEST (IN)	36/38in	39/41in	42/44in	45/47in	48/49in
CHEST (CM)	91/96cm	99/104cm	106/111cm	114/119cm	124cm
WAIST (IN)	30/32in	32/34in	34/36in	36/38in	
WAIST (CM)	76/81cm	81/86cm	86/91cm	91/96cm	

"ONE" FIT SIZES						
The following size guide offers a classic and/or slimmer fit. For relaxed or oversized look, use size up.						
	XS	S	M	L	XL	XXL
CHEST (IN)	33/35in	36/38in	39/41in	42/44in	45/47in	48/49in
CHEST (CM)	84/89cm	91/96cm	99/104cm	106/111cm	114/119cm	122/125cm

CHILDREN'S FIT SIZES						
YEARS	2-3	4-5	6-7	8-9	10-12	12+
HEIGHT (CM)	92/98cm	104/110cm	116/122cm	128/134cm	140/152cm	158/164cm
CHEST (IN)	20/21in	22/23in	24/26in	27/28in	30/32in	33/34in
CHEST (CM)	51/53cm	56/58cm	61/66cm	68/71cm	76/81cm	83/87cm

BABIES' FIT SIZES						
MONTHS	0-3	3-6	6-12	12-18	18-24	2-3 Years
HEIGHT (CM)	53/60cm	60/66cm	66/76cm	76/86cm	86/93cm	92/96cm
HATS	One Size	0-9 months				
BIBS	One Size	0-18 months				

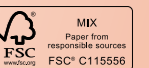
mantis
★SUPERSTAR

mantis
★SUPERSTAR

one

mantis mantis
MINI KIDS

BABYBUGZ






You may find that measurements such as height are a better guide than age when it comes to choosing the right size for our Mantis Kids, Mantis Mini and Babybugz ranges.

FABRIC TYPES & FIBRES

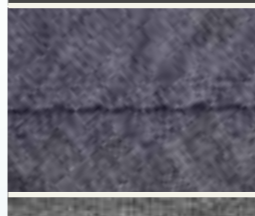



WITHOUT FIBRES, FABRICS AND STITCHING, OUR MANTIS WORLD WOULD LOOK RATHER BARE. HERE'S OUR EXPLANATION OF SOME OF THE TERMINOLOGY YOU MAY COME ACROSS IN THIS BROCHURE TOGETHER WITH SOME CLOSE-UP IMAGES OF ACTUAL GARMENTS.

THE VERY FIBRES OF OUR (SUSTAINABLE) BEING

Organic Cotton	Organic Cotton is a natural, renewable and sustainable fibre grown from non-genetically modified plants without the use of any synthetic fertilisers, insecticides or pesticides. It benefits cotton farmers and the environment by avoiding the harmful and often toxic effects of these chemicals thus improving workers' conditions whilst aiding biodiversity and replenishment of soil quality.
rPET	rPET (recycled polyethylene terephthalate to give it its full name) is the recycled form of PET: a plastic resin derived from oil and gas and the most common form of polyester. PET is used to make, amongst other things, drinks bottles and food containers. Recycled PET is just that; PET packaging that's been reprocessed into the form of polyester we know in the clothing industry; saving energy compared to making virgin polyester and keeping bottles out of landfill.
 TENCEL®	TENCEL® by Lenzing is a natural yet man-made sustainable fibre. Of botanic origin (wood pulp from managed forests) the fibre's patented closed-loop production is eco-friendly. TENCEL® fibres are more absorbent than cotton, softer than silk, cooler than linen and have excellent drape. TENCEL® is a registered trademark of Lenzing Group.

	FABRIC TYPE	THE FABRICS OF OUR SOCIETY
	Single Jersey	The go-to knitted fabric construction for T Shirts with good levels of stretch, single jersey can be identified by its quite distinctive right (with smooth, V-shaped "knit" stitches) and wrong (semi-circular type looped "purl" stitches) sides. The cotton to make all our single jersey fabrics is combed to remove all the shorter fibres and then ring spun to give smoother, softer fabric handle with increased durability. Note; single jersey can also be referred to as "plain" or "single knit".
	Single Jersey (peach finish)	Our Superstar T shirt range uses single jersey fabric that has been given an extra surface treatment that results in a premium, super-smooth and velvety handle. This peach-skin look and feel is obtained by breaking some of the surface fibres of the fabric using abrasive rollers and, unlike many chemical softening treatments which will eventually wash off, the mechanical peaching process is permanent.
	Interlock	Although at first glance it may look the same as single jersey, the difference between the two fabrics becomes apparent when you look at the reverse because, unlike the plain-knit, interlock is the same back and front. In fact, it's almost like 2 layers of single jersey have been placed back-to-back and joined: resulting in a lovely loft and sponginess. All Babybugz bodysuits and T's are made using super smooth interlock fabric incorporating combed, ring spun cotton yarn – the perfect choice for baby soft skins.
	Yarn Dyed Stripes	All stripes are not created equal! All our striped fabric is yarn dyed which means that the stripe has been knitted in using already dyed yarns as opposed to being printed on plain fabric afterwards. This gives a much better basis for decoration, retains the properties of the fabric and, on our striped interlock fabric, looks exactly the same back and front.

	FABRIC TYPE	THE FABRICS OF OUR SOCIETY
	French Terry	Essentially looking like a smooth single jersey fabric on the front with a series of loops on the back, French Terry is one of the most popular and recognisable fabrics for hoodies and sweatshirts. Normally heavier than a T shirt fabric, but lighter than as used for most sweats, it's got a bit of stretch and, courtesy of the loops which can help trap warm air, can offer a good degree of cosiness. And yes, all the cotton in our French Terry is ring spun and combed.
	Brush Back Fleece	The brush back fleece fabric we use to make our Babybugz hoodie, sweatpants and All-in-One is smooth on the surface so perfect for decoration, and almost fluffy on the reverse. The back of the fabric doesn't start out like that though. It's created with loops like French Terry and then passed through a process involving wire brushes called "brushing" to tease the surface creating the soft and fuzzy inner we know and love today.
	Brush Back Fleece (peach finish)	Our Superstar Hoods and Sweats range is created from knitting a slightly heavier yarn (than our Babybugz garments) into a smooth surfaced/ looped-back fabric and then using both a brushing process on the inside and a peaching process on the outside to create the characteristic and much-acclaimed premium handle. It's soft, it's smooth and provides a perfect basis for decoration. And it feels great.
	Rib	Unlike single jersey fabrics, for example, which are created by using one type of stitch on the front of the fabric and another on the reverse, rib fabrics are knitted using alternating stitch types (knit & purl) resulting in visible vertical rows, or "ribs". The resultant fabric has a high degree of stretch and shape retention explaining why rib fabrics are often, but not exclusively, used for trims and edging (think necklines, hems on sweats and hoodies or cuffs).
	Slub	Slubs are uneven lumps or "deliberate irregularities" along a length of yarn that, when knitted into a fabric, create a thick'n'thin, textured look – but not so much as to cause problems in printing. We call our slub fabric "vintage" because it's got that appealing softness and casual comfort that comes with longevity of wear. Our Mantis slub T's use 100% organic cotton slub yarns in a single jersey construction (see previous).

	STITCH TYPE	KEEPING IT TOGETHER; STITCHING
	Flatlock	As the name would suggest, a flatlock stitch produces a flat seam without any excess fabric bulk behind. The 2 fabrics being joined are placed one on top of the other and then stitched through both the layers. Flatlock seams look the same back and front and are most often used on garments that lie flat on the skin or as decorative stitch effect detail.
	Twin needle	The twin needle (or double needle) stitch type is most often used to neaten and secure the hem of a garment though may also be seen round necklines or seams as a topstitch detail. Featuring 2 parallel rows of straight stitching on the face of the fabric, it has an almost zig-zag array of threads on the reverse under which the raw edge of fabric will be secured to give a tidy finish.
	Cover Stitch	Another option when securing folded hems and edges would be the cover stitch. For all intents and purposes like a slightly elaborate zig zag stitch on both the face and reverse of the fabrics, and due to the amount of thread, it's a slightly bolder seam than the twin needle alternative. Both hem options depend on the correct sewing machine setting if they're to offer the required levels of seam stretch.
	Grin Stitch	At the hem or edge stitching can be used to great effect and to create a point of difference over other garments. The "grin" stitch - as we call it - is so named due to the toothy-grin look of vertical stitches exposed due to a deliberate loose tensioning and setting of the sewing machine.

BESPOKE

FIRST IMPRESSIONS COUNT. BESPOKE CLOTHING PROVIDES AN OPPORTUNITY TO FURTHER LIFT AND ENHANCE YOUR BRAND IDENTITY ABOVE THE GENERAL MASS MARKET OFFERINGS, MEANING THAT YOU CAN ACHIEVE UNIQUE AND TAILOR-MADE GARMENTS TO YOUR OWN INDIVIDUAL REQUIREMENTS.

Mantis World's dedicated and professional team of experienced merchandisers offer a start-to-finish bespoke garment service and, by combining our industry know-how with the very latest trends in fabric, fashion and branding, we can create bespoke clothing that underpins your brand and its core values.

Our team will guide you through the process and all the aspects from initial concept through to delivery – all part of our easy to use service.

The opportunities and options in creating unique tailored and customer specific garments are extensive;

- Your own design styles
- Fabric selections & finishes
- Specific Pantone colour matching
- Printing, embroidery, badging
- Unique branded trims, buttons, zippers and poppers
- Brand labelling and swing ticketing
- Packaging.

Mantis World's "Well Made" ethos assures you of the best standards in ethical and sustainable manufacture: with due care and attention to all stages of production. High product quality also leads to longevity in wear – meaning the garment can be worn time and time again resulting in increased brand awareness, better customer satisfaction and also the best return on investment. We work with partner manufacturers across the world, including Turkey to Bangladesh and Tanzania to Pakistan - all sharing our ethical ethos and quality commitment. Alternatively, perhaps our new "Made in Britain" supply chain will provide your perfect fit? It offers a reduced carbon footprint compared with sourcing overseas, lower minimum order quantities and shorter delivery schedules whilst helping to revive the UK's once world leading garment and textile industry.

Our bespoke team can also offer a complete customisation service of our current Mantis World range: from our industry-leading babywear, adults' and kids' styles, to our renowned "Superstar" range.

Trusted by retail, promotional, commercial and FMCG businesses for many years, we have the heritage and experience to deliver on your expectations and all within your budget and delivery requirements.

Contact us for more information: you might well be surprised at just how versatile and competitive our bespoke clothing service is.



**A WORLD
OF
POSSIBILITIES**

INDEX

BABYBUGZ



BABYBUGZ

Little Stars



Hello, we are Babybugz and welcome to our 2018 world. Our story may have started at the turn of the century but the twinkle is still definitely in our eyes and we remain in love with being able to present you with a range of ethically-made blank babywear, specially designed for the little ones. Ever mindful of delicate skins, each fabric has been carefully developed and every style responsibly manufactured. It's a brand-new world for many, and we reckon it's worth making it the best we possibly can.

We Are Babybugz. Welcome.



BZ10 BABY BODYSUIT

Envelope neckline / 3 self-coloured poppers at crotch / Soft and stretchy fabric / Binding at neck, arms and legs for shape retention.



RED BUBBLE GUM PINK POWDER PINK DUSTY BLUE NAUTICAL NAVY KELLY GREEN SOFT YELLOW WHITE* HEATHER GREY MELANGE BLACK*

100% Cotton (Heather Grey Melange 85% Cotton 15% Viscose) / Interlock / 200gsm
 Sizes (Months): 0-3, 3-6, 6-12, 12-18, 18-24 (* colours available in 18-24)



FUCHSIA COBALT BLUE WHITE ORGANIC ORGANIC NATURAL MOCHA CAMOUFLAGE GREEN BLACK ORGANIC

100% Organic Cotton (Mocha 60% Organic Cotton 40% Polyester) / Interlock / 200gsm
 Sizes (Months): 0-3, 3-6, 6-12, 12-18

ALL 100% ORGANIC COTTON SHADES



ORGANIC
 CERTIFIED BY CONTROL UNION CERTIFICATION CU811271

MOCHA



colour
 me
 happy

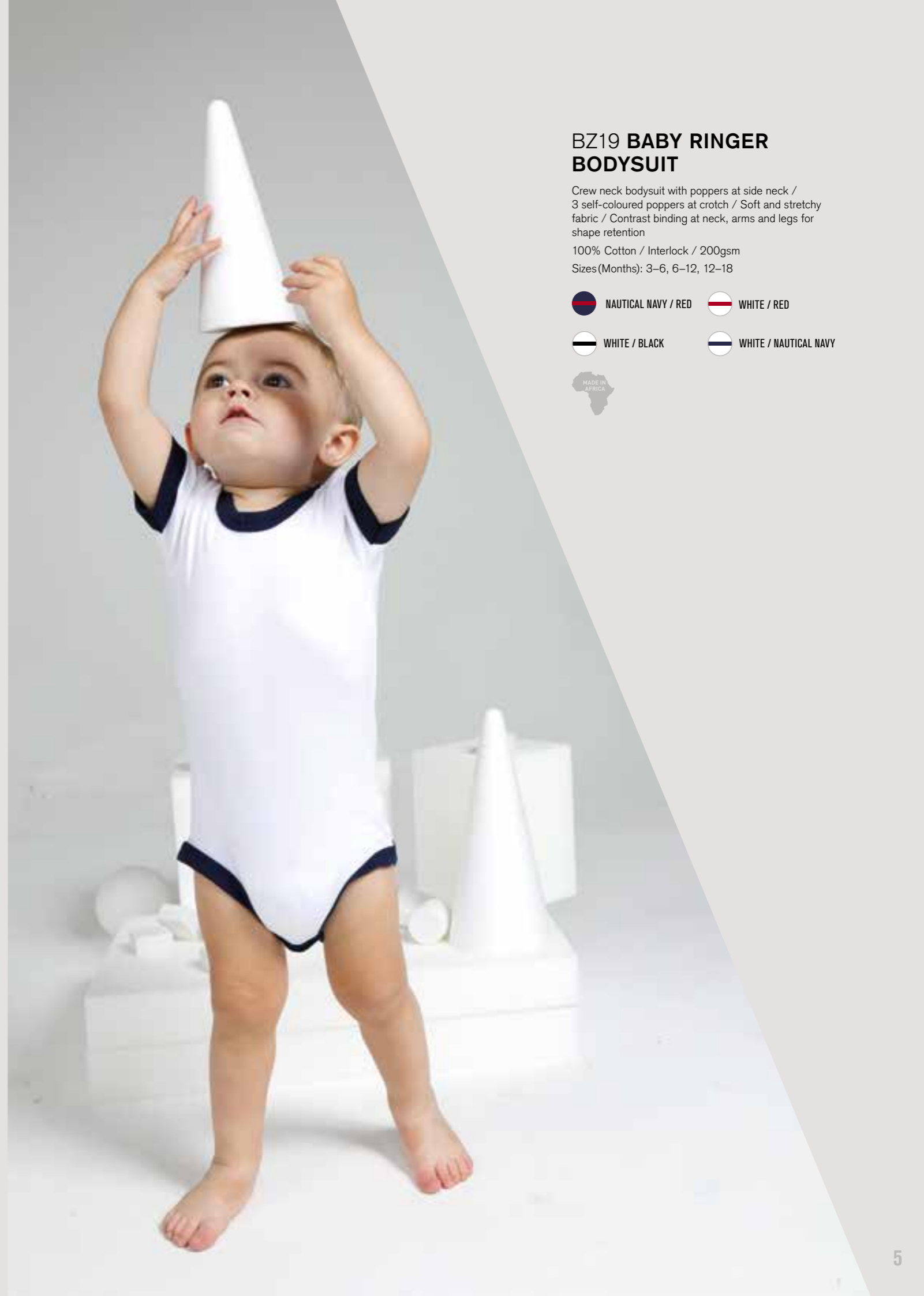




BZ10S BABY STRIPY BODYSUIT

Yarn-dyed stripes / Envelope neckline / 3 silver-coloured poppers at crotch / Soft and stretchy fabric / Binding at neck, arms and legs for shape retention
 100% Cotton (Light Grey Melange; 97% Cotton, 3% Viscose) / Interlock / 200gsm
 Sizes (Months): 0-3, 3-6, 6-12

- | | |
|--|--|
|  RED / WASHED WHITE |  LIGHT GREY MELANGE / WHITE |
|  BUBBLE GUM PINK / WASHED WHITE |  NAVY / WASHED WHITE |
|  POWDER PINK / WHITE |  BLACK / WHITE |
|  ANTIQUE BLUE / DUSTY BLUE | |



BZ19 BABY RINGER BODYSUIT

Crew neck bodysuit with poppers at side neck / 3 self-coloured poppers at crotch / Soft and stretchy fabric / Contrast binding at neck, arms and legs for shape retention

100% Cotton / Interlock / 200gsm
 Sizes (Months): 3-6, 6-12, 12-18

- | | |
|---|---|
|  NAUTICAL NAVY / RED |  WHITE / RED |
|  WHITE / BLACK |  WHITE / NAUTICAL NAVY |





BZ41 BABY BASEBALL PLAYSUIT

WITH ORGANIC COTTON

Contrast red poppers at neck and leg opening / Short leg length / Comfort side seams / Red taping along inside back neck / Tear-off label

White / Nautical Navy / Red: 100% Organic Cotton (White / Heather Grey Melange / Red: 94% Organic Cotton 6% Polyester) / Interlock / 200gsm

Sizes (Months): 3-6, 6-12, 12-18



BZ48 BABY STRIPED PLAYSUIT NEW

WITH ORGANIC COTTON

Narrow, yarn-dyed stripes / Shorts-style bodysuit / Envelope neck / Poppers at crotch for ease of dressing / Tear-off label

100% Organic Cotton (White/ Heather Grey Melange 92% Organic Cotton 8% Viscose) / Interlock / 200gsm

Sizes (Months): 3-6, 6-12, 12-18



BZ05-TLC BABY KIMONO BODYSUIT

ORGANIC COTTON

Stylish wrap front bodysuit / Soft and stretchy fabric / Self-coloured poppers at front and at crotch / Raglan sleeves

100% Organic Cotton / Interlock / 200gsm

Sizes (Months): 0-3, 3-6, 6-12





BZ13 BABY ROMPASUIT

Soft and stretchy fabric / Envelope neckline / Binding at sleeve and leg ends for shape retention / Self-coloured poppers between legs
 100% Cotton (Heather Grey Melange 85% Cotton 15% Polyester) / Interlock / 200gsm
 Sizes (Months): 3-6, 6-12, 12-18

- WHITE
- DUSTY BLUE
- POWDER PINK
- NAUTICAL NAVY
- HEATHER GREY MELANGE
- BLACK



BZ13S BABY STRIPY ROMPASUIT

Yarn dyed stripes / Soft and stretchy fabric / Envelope neckline / Binding at sleeve and leg ends for shape retention / Self-coloured poppers between legs
 100% Cotton / Interlock / 200gsm
 Sizes (Months): 3-6, 6-12, 12-18

- RED / WASHED WHITE
- BUBBLE GUM PINK / WASHED WHITE
- NAVY / WASHED WHITE

BZ30 BABY LONG SLEEVE BODYSUIT

ORGANIC COTTON

Envelope neckline / Binding at sleeve ends for shape retention / Soft and stretchy / Self-coloured poppers at crotch / Tear-off label
 100% Organic Cotton / Interlock / 200gsm
 Sizes (Months): 0-3, 3-6, 6-12, 12-18 (* colours available in 0-3)

- WHITE*
- FUCHSIA*
- ORGANIC NATURAL
- NAUTICAL NAVY*
- BLACK





BZ24 BABY HOODED BLANKET

ORGANIC COTTON

Single layer blanket / Binding around edges for shape retention / Triangular hood at corner / Tear-off label
100% Organic Cotton / Interlock / 200gsm

One Size

● WHITE / WHITE



ORGANIC.
CERTIFIED BY CONTROL UNION CERTIFICATION CU811271



BZ35 BABY ENVELOPE SLEEPSUIT WITH SCRATCH MITTS

ORGANIC COTTON

Envelope neckline / Scratch mitts which can be folded or unfolded as wanted / Integral feet / Self coloured poppers at leg opening / Tear-off label
100% Organic Cotton / Interlock / 200gsm

Sizes (Months): 0-3, 3-6, 6-12

● WHITE ● ORGANIC NATURAL



ORGANIC.
CERTIFIED BY CONTROL UNION CERTIFICATION CU811271



BZ02S BABY STRIPY T

Soft and stretchy fabric / Yarn dyed stripes / 2 silver coloured poppers at side neck / Cover seam at hem / 1x1 rib neck / Tear-off label

100% Cotton (Light Grey Melange/White: 97% Cotton 3% Viscose) / Interlock / 200gsm

Sizes (Months): 3-6, 6-12, 12-18, 18-24

-  RED / WASHED WHITE
-  LIGHT GREY MELANGE / WHITE
-  NAVY / WASHED WHITE






BZ11 BABY LONG SLEEVE T

Soft and stretchy fabric / 2 self-coloured poppers at side neck / Cover stitch at hem and sleeve ends

100% Cotton / Interlock / 200gsm

Sizes (Months): 3-6, 6-12, 12-18, 18-24

-  WHITE
-  BLACK
-  RED
-  DUSTY BLUE
-  POWDER PINK
-  BUBBLE GUM PINK
-  NAUTICAL NAVY






BZ45 BABY STRIPED T NEW

WITH ORGANIC COTTON

Narrow, yarn-dyed striped fabric / 2 tonal poppers at side of neck / Striped neck binding / Twin needle hem / Tear-off label

100% Organic Cotton (White / Heather Grey Melange 92% Organic Cotton, 8% Viscose) / Interlock / 200gsm

Sizes (Months): 3-6, 6-12, 12-18

-  ORGANIC NATURAL / MOCHA
-  WHITE / HEATHER GREY MELANGE
-  WHITE / NAUTICAL NAVY





BZ02 BABY T

Soft and stretchy fabric / 2 self-coloured poppers at side neck / Cover seam at hems / 1x1 rib neck.



BLACK LIGHT GREY MELANGE WHITE MINT SOFT YELLOW ORANGE RED BUBBLE GUM PINK POWDER PINK DUSTY BLUE NAUTICAL NAVY

100% Cotton (Light Grey Melange 95% Cotton 5% Viscose) / Interlock/ 200gsm
 Sizes (Months): 3-6, 6-12, 12-18, 18-24



FUCHSIA COBALT BLUE WHITE ORGANIC* ORGANIC NATURAL MOCHA CAMOUFLAGE GREEN HEATHER GREY MELANGE BLACK ORGANIC*

100% Organic Cotton (Heather Grey Melange 85% Organic Cotton 15% Polyester, Mocha 60% Organic Cotton 40% Polyester) / Interlock/ 200gsm
 Sizes (Months): 0-3, 3-6, 6-12, 12-18 (* colours available in 0-3)





ORGANIC. CERTIFIED BY CONTROL UNION CERTIFICATION CU811271



BZ38 BABY STRIPY LONG SLEEVE T

Contrast elbow patches and neckline / Envelope neck / Yarn-dyed stripes / Soft and stretchy fabric / Tear-off label
 100% Cotton / Interlock / 200gsm
 Sizes (Months): 6-12, 12-18, 18-24




-  BUBBLE GUM PINK / WASHED WHITE / RED
-  NAVY / WASHED WHITE / RED



BZ08-TLC BABY ENVELOPE LONGSLEEVE TEE

ORGANIC COTTON

Soft and stretchy fabric / Envelope neckline / Binding at sleeve ends for shape retention
 100% Organic Cotton / Interlock / 200gsm
 Sizes (Months): 3-6, 6-12, 12-18

-  WHITE
-  ORGANIC NATURAL
-  BLACK



ORGANIC.
 CERTIFIED BY CONTROL UNION CERTIFICATION CU811271



BZ43 BABY SUPERSTAR BASEBALL T

WITH ORGANIC COTTON

Curved hem / Long sleeves / Soft, peach-feel fabric / Contrast stitching along hem edge / Taped back neck / Tear-off label
 100% Organic Cotton / Peach Finish Single Jersey / 150gsm
 Sizes (Months): 6-12, 12-18, 18-24

-  WASHED WHITE / SWISS NAVY
-  WASHED WHITE / WARM RED



ORGANIC.
 CERTIFIED BY CONTROL UNION CERTIFICATION CU811271



BZ49 BABY LEGGINGS NEW

WITH ORGANIC COTTON

Slight drop-crotch styling / Gently elasticated waist / No centre seams for decoration potential / Gusset for ease of movement / Tear-off label

100% Organic Cotton (Heather Grey Melange: 85 % Organic Cotton 15% Viscose) / 200gsm / Interlock

Sizes (Months): 3-6, 6-12, 12-18, 18-24

WHITE
 NAUTICAL NAVY
 HEATHER GREY MELANGE

WHITE / NAUTICAL NAVY HEATHER GREY MELANGE



ORGANIC. CERTIFIED BY CONTROL UNION CERTIFICATION CU811271

BZ46 BABY STRIPED LEGGINGS NEW

WITH ORGANIC COTTON

Narrow, yarn-dyed stripes / Slight drop-crotch styling / Gently elasticated waist / No centre seams for decoration potential / Gusset for ease of movement / Tear-off label

100% Organic Cotton (White / Heather Grey Melange 92% Organic Cotton, 8% Viscose) / 200gsm / Interlock

Sizes (Months): 3-6, 6-12, 12-18

WHITE / HEATHER GREY MELANGE
 WHITE / NAUTICAL NAVY

WHITE / NAUTICAL NAVY WHITE / HEATHER GREY MELANGE



ORGANIC. CERTIFIED BY CONTROL UNION CERTIFICATION CU811271





BZ47 BABY STRIPED HOODED T NEW
WITH ORGANIC COTTON

Mock draw cords at hood / Narrow, yarn-dyed stripes / 5 tonal poppers down front / 3-piece, double layer hood / Straight hem with side vents / Taped back neck / Half-moon back neck locker patch / Tear-off label

100% Organic Cotton (White/ Heather Grey Melange 92% Organic Cotton, 8% Viscose) / 200gsm / Interlock

Sizes (Months): 3-6, 6-12, 12-18



BZ40 BABY BOMBER JACKET
WITH ORGANIC COTTON

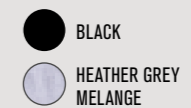
Antique brass effect poppers / Front welt pockets / Rib at neck, hem and cuffs / Self fabric back neck locker patch / Natural herringbone tape along inside neck / Loop back fabric/ Tear-off label

60% Organic Cotton 20% Cotton 20% Polyester / French Terry / 300gsm

Sizes (months): 6-12, 12-18, 18-24 (years): 2-3



CERTIFIED BY CONTROL UNION CERTIFICATION CU811271






BZ25 BABY ALL-IN-ONE

Brushed inner / Extra-long cuffs at sleeve and legs which can be folded back for improved fit / Flat comfort seams / Seam-free at back for optimum decoration potential / 3-piece single layer hood / Kangaroo pocket / Zip front with comfort tab / Tear-off label

80% Cotton 20% Polyester (Heather Grey Melange: 84% Cotton 16% Polyester) / Brush Back Fleece / 250gsm

Sizes(Months): 6-12, 12-18, 18-24, (Years): 2-3

- | | |
|---|--|
|  BUBBLE GUM PINK |  HEATHER GREY MELANGE |
|  VANILLA |  NAUTICAL NAVY |
|  RED |  BLACK |

BZ32 BABY HOODIE

Single layer 3 piece hood / Kangaroo pockets with extended stitch detail / Straight hem with drop tail / Natural herringbone tape at inside neck and side vents / Straight cuffs / Brushed inner / Mock natural-coloured drawcord detail on side hood / Tear-off label

80% Cotton 20% Polyester (Heather Grey Melange 84% Cotton 16% Polyester) / Brush Back Fleece / 250gsm

Sizes (Months): 6-12, 12-18, 18-24, (Years): 2-3

- BLACK
- BUBBLE GUM PINK
- NAUTICAL NAVY
- HEATHER GREY MELANGE



BZ33 BABY SWEATPANTS

Comfort waistband with natural coloured mock drawcords / Extra long cuffs for adjustable length / Front and back seam free for increased decoration potential / Brushed inner / Flat seams for comfort / Tear-off label

80% Cotton 20% Polyester (Heather Grey Melange: 84% Cotton 16% Polyester) / Brush Back Fleece / 250gsm

Sizes (Months): 6-12, 12-18, 18-24, (Years): 2-3

- BLACK
- BUBBLE GUM PINK
- NAUTICAL NAVY
- HEATHER GREY MELANGE



BZ31 BABY SWEATSHIRT

Flat seam X at front neck / 1x1 rib neck and comfort cuffs / 2 self-coloured poppers at side neck / Drop tail with side vents / Inside self-fabric locker patch / Tear-off label

80% Cotton 20% Polyester (Heather Grey Melange 84% Cotton 16% Polyester) / French Terry / 280gsm

Sizes (Months): 6-12, 12-18, 18-24

- BLACK
- BUBBLE GUM PINK
- NAUTICAL NAVY
- HEATHER GREY MELANGE



Hats & Bibs



1 BZ01-TLC BABY ORGANIC HAT ORGANIC COTTON

Soft and stretchy fabric / Deep, double layered band for comfort and fit / Twin knot or can knot 2 ties together
100% Organic Cotton / Interlock / 200gsm

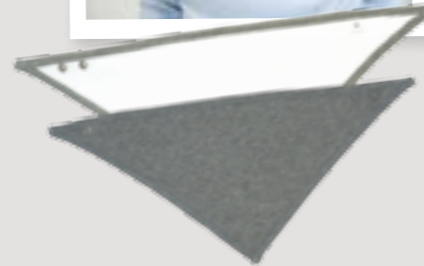
One Size



2 BZ15 BABY 1 KNOT HAT

Soft and stretchy fabric / Deep, double layered comfort band / Single knot
100% Cotton (Heather Grey Melange: 85% Cotton 15% Polyester) / Interlock / 200gsm

One Size



3 BZ15S BABY STRIPY 1 KNOT HAT

Yarn-dyed stripe / Soft and stretchy fabric / Deep, double layered comfort band / Single knot

100% Combed Cotton (Light Grey Melange / White: 97% Cotton 3% Viscose) / Interlock / 200gsm

One Size

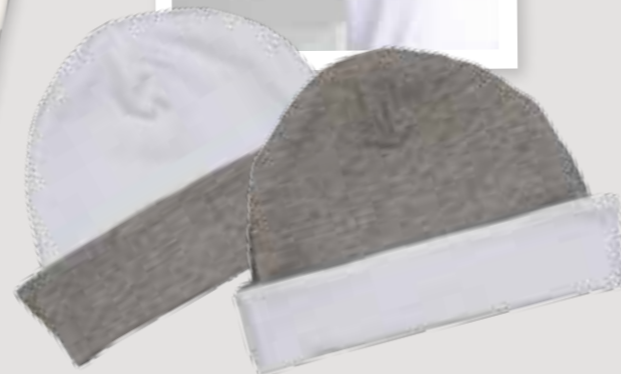


4 BZ12 BABY BIB

Double layer / Hook and loop fastening at back neck / Binding at edges for shape retention

100% Cotton (Heather Grey Melange: 85% Cotton 15% Polyester) / Interlock / 200gsm

One Size



5 BZ23 BANDANA BIB

Reversible bib / Double-position pop fasteners at back neck / Contrast binding at edge for shape retention / Tear-off label

100% Cotton (White / Heather Grey Melange: 98% Cotton 2% Polyester) / Interlock / 200gsm

One Size



6 BZ16 BABY BIB WITH TIES

Single layer bib with ties at back neck / Binding around edges in self-coloured or contrast colour

100% Cotton (White Organic and Organic Natural 100% Organic Cotton) / 200gsm / Interlock

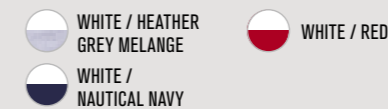
One Size



7 BZ44 REVERSIBLE SLOUCH HAT WITH ORGANIC COTTON

Extra-long so can be worn as slouch hat or folded back / Soft and stretchy fabric / Tear-off label
100% Organic Cotton (White / Heather Grey Melange 93% Organic Cotton 7% Polyester) / Interlock / 200gsm

One Size



mantis

MINI

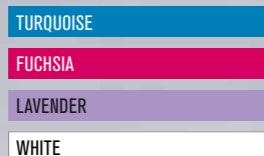


HM80 GIRLS T

Modern fit girls T / Curved hem/ Slightly wider neckline / Twin needle hem and sleeve ends / Tear-off label

100% Cotton / Single Jersey / 150gsm

Sizes (Years/Height): 2-3/92-98cm, 4-5/104-110cm, 6-7/116-122cm

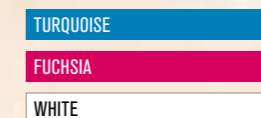


HM81 GIRLS RACERBACK TANK VEST

Racerback styling / Curved hem / Binding at neck and armholes for durability / Tear-off label

100% Cotton / Single Jersey / 150gsm

Sizes (Years/Height): 2-3/92-98cm, 4-5/104-110cm, 6-7/116-122cm





**HM104-TLC
KIDS T**

ORGANIC COTTON

Unisex / 1x1 rib at neck / Natural coloured tape at back neck / Twin needle hem and sleeve ends

100% Organic Cotton / Single Jersey / 130gsm

Sizes (Years/Height): 2-3/92-98cm, 4-5/104-110cm, 6-7/116-122cm

NAUTICAL NAVY

WHITE



ORGANIC. CERTIFIED BY CONTROL UNION CERTIFICATION CUB11271

BLACK / WHITE

CLASSIC BLUE / WHITE

HM109S KIDS STRIPY T

Yarn dyed striped jersey fabric / 1x1 rib at neck / Twin needle stitching at hem and sleeve ends

100% Cotton / Single Jersey / 150gsm

Sizes (Years/Height): 2-3/92-98cm, 4-5/104-110cm, 6-7/116-122cm



HM15 KIDS SUPERSOFT T

Unisex classic fit T / Fashionable contrast taping at back neck /

1x1 rib neckline / Twin needle hem and sleeve ends

100% Cotton / (Heather Grey Melange 85% Cotton 15% Polyester) / Single Jersey / 150gsm

Sizes (Years/Height): 2-3/92-98cm, 4-5/104-110cm, 6-7/116-122cm

WASHED WHITE / RED TAPE

WASHED RED / NAVY TAPE

WASHED NAVY / RED TAPE

WASHED KELLY GREEN / WHITE TAPE

HEATHER GREY MELANGE / RED TAPE

COBALT BLUE / NAVY TAPE

BLACK / HEATHER GREY TAPE





HM46 KIDS LONG SLEEVE RAGLAN T

Raglan sleeve for ease of movement / Soft 1x1 rib at neck / Taped back neck for durability / Cover seam detailing

100% Cotton (Heather Grey Melange; 85% Cotton 15% Polyester) / Single Jersey / 150gsm
 Sizes (Years/Height): 2-3/92-98cm, 4-5/104-110cm, 6-7/116-122cm

- BLACK
- NAUTICAL NAVY
- HEATHER GREY MELANGE
- WHITE

- HEATHER GREY MELANGE SWISS NAVY
- WASHED WHITE SWISS NAVY
- WASHED WHITE WARM RED

HM16 KIDS SUPERSTAR BASEBALL T

Modern, unisex fit / Soft-handle peach finish fabric / Curved raglan seams / Curved hem with contrast overlock edge / Tear-off label

100% Combed Cotton (Heather Grey Melange; 90% Cotton 10% Viscose) / Peach finished jersey / 150gsm
 Sizes (Years/Height): 2-3/92-98cm, 4-5/104-110cm, 6-7/116-122cm



WELCOME TO OUR WORLD



ESTABLISHED IN 2000, WE'VE BEEN WORKING CLOSELY WITH PARTNER FACTORIES IN TANZANIA, BANGLADESH AND PAKISTAN AND ETHICALLY MAKING GARMENTS THAT ARE DESIGNED TO BE DECORATED. HOME TO MANTIS, SUPERSTAR, MANTIS MINI, MANTIS KIDS, BABYBUGZ AND "ONE" BY MANTIS, WE DESIGN, DEVELOP AND PRODUCE CONTEMPORARY BLANK CLOTHING THAT LOOKS GREAT AND THAT YOU CAN FEEL GOOD ABOUT.



mantis
KIDS

mantis
MINI

BABYBUGZ